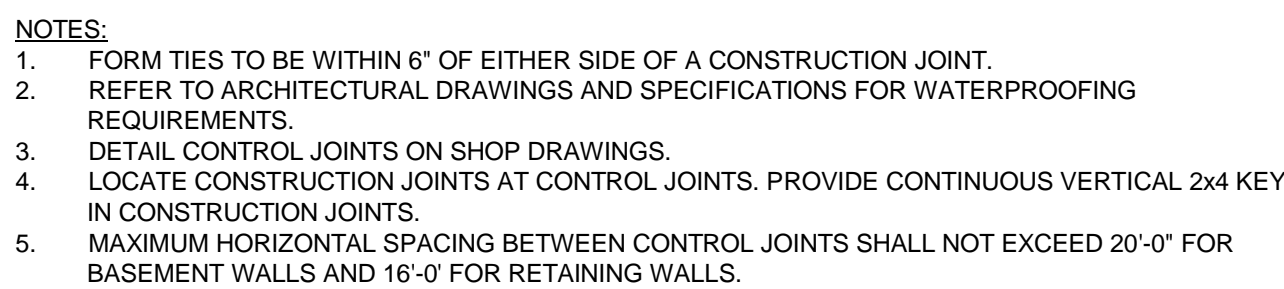


SLAB EDGE AT STAIR



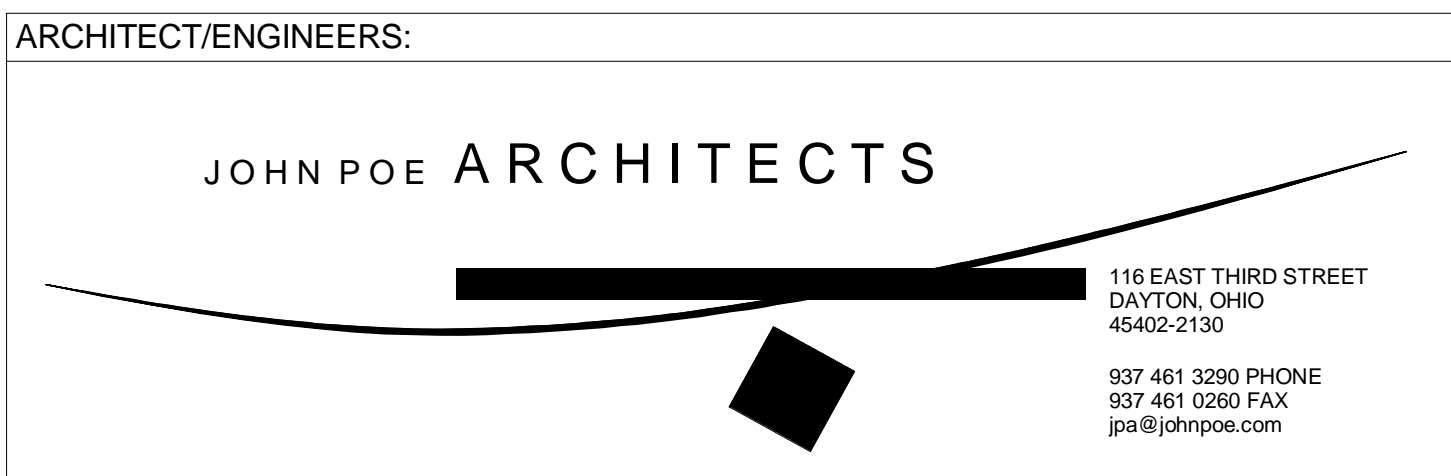
VERTICAL WALL CONTROL AND CONSTRUCTION JOINTS



CONSULTANTS:

THP

THP Limited, Inc.
100 East Eighth Street
Cincinnati, Ohio 45202
Phone: 513.241.3222
Fax: 513.241.2981
www.thpltd.com



Project Title		
Renovate CLC Building 211 West		
Location		
Chillicothe, Ohio		
Date	Checked	Drawn
Sept. 6, 2013	MCC	MRB

Project No.
VA Project No. 538-107
JPA Project No. 11001.00

Building Number
211

Drawing Number
S003

Dwg. 47 of 132

Office of
Construction
and Facilities
Management

 Department of
Veterans Affairs

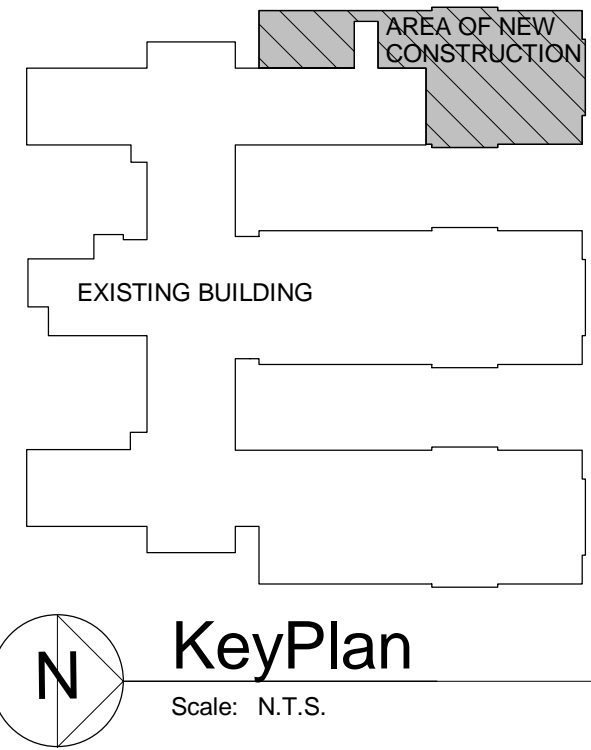
FULLY SPRINKLERED

- DRAWING NOTES:
- REFER TO S001 SERIES FOR GENERAL NOTES AND TYPICAL DETAILS.
 - REFER TO S200 SERIES FOR FOUNDATION DETAILS.
 - ELEVATION: 100'-0" = 703.15'

- KEY NOTES: (X)
- REFER TO ARCH. FOR WALL OPENINGS.
 - PROVIDE CONTROL JOINTS IN SLAB ON GRADE AT 16'-0" MAX. EACH WAY, U.N.O.
 - CONNECT PEDESTALS WITH 12" WIDE CONCRETE WALL. REINFORCE WALL WITH #5 AT 12" E.W., E.F. T/WALL + T/PEDESTAL. DOWELS INTO TOP OF FOOTING TO MATCH VERTICAL WALL STEEL.
 - REFER TO MECHANICAL DRAWINGS FOR LOCATION OF BREAK IN SLAB ALLOWING PLACEMENT OF FUTURE SANITARY LINE. PROVIDE KEYED CONSTRUCTION JOINT FOR FUTURE SLAB PLACEMENT.
 - PROVIDE 12" THICKENED SLAB BELOW STAIR LANDING SUPPORT POST. REFER TO TYPICAL DETAIL ON S002. COORDINATE LOCATION WITH STAIR MANUFACTURER.
 - #4 DOWELS AT 18" O.C. EPOXY EMBED 6" INTO EXISTING CONCRETE. INSTALL WATERSTOP RX BEAD BETWEEN NEW AND EXISTING BASEMENT WALLS.
 - THICKEN S.O.G. BELOW COLUMN FOR A 2'-0"x2'-0" AREA, TOTAL DEPTH=24".
 - ADD (2) #8 TO SLAB. EXTEND 2'-0" BEYOND OPENING EDGE.
 - DO NOT DAMAGE EXISTING BASEMENT WALL OR FOUNDATIONS TO REMAIN WHILE REMOVING PORTIONS REQUIRED IN THE ARCHITECTURAL DRAWINGS.

- LEGEND:
- INDICATES WALL CONTROL JOINT
 - INDICATES FOOTING STEP. REFER TO TYPICAL DETAIL ON S002.
 - INDICATES FOOTING MARK. REFER TO SCHEDULE BELOW.
 - INDICATES TYPE OF PEDESTAL.
 - INDICATES TOP OF FOOTING ELEVATION.
 - INDICATES TOP OF PEDESTAL ELEVATION.

FOOTING SCHEDULE			
MARK	SIZE	THICKNESS	REINFORCING
A	6"x6"	24"	(7) #6 EW
B	7"x7"	24"	(7) #6 EW
C	7"x14"	24"	(7) #6 LONG (14) #6 SHORT
D	6"x6"	24"	(7) #7 EW
E	9"x9"	36"	(12) #7 EW
F	10"x10"	36"	(13) #7 EW
G	5"x10"	24"	(10) #6 LONG (9) #6 SHORT
H	7"x10"	24"	(7) #7 LONG (9) #7 SHORT
J	6"x11"	24"	(10) #6 LONG (8) #6 SHORT
K	6"x6"-6"	24"	(8) #6 LONG (9) #6 SHORT



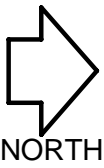
KeyPlan

Scale: N.T.S.

1 FOUNDATION PLAN

1/8" = 1'-0"

NOTE:
FIELD VERIFY EXISTING FOOTING LOCATIONS. LOCATIONS SHOWN ARE INTERPRETED FROM THE ORIGINAL BUILDING DRAWINGS AND MAY VARY FROM ACTUAL CONDITIONS. NEW FOOTINGS ADJACENT TO EXISTING FOOTING SHOULD BEAR AT SAME ELEVATION AS EXISTING. NOTIFY ENGINEER IF DEVIATION IS MORE THAN 0'-9".



Revisions	Bid Documents	Date
1	Bid Documents	9/6/13

CONSULTANTS:

THP

THP Limited, Inc.
100 East Eighth Street
Cincinnati, Ohio 45202
Phone: 513.241.3222
Fax: 513.241.2981
www.thpltd.com



ARCHITECT/ENGINEERS:

JOHN POE ARCHITECTS

116 EAST THIRD STREET
DAYTON, OHIO 45402-2130
937.461.3290 PHONE
937.461.0280 FAX
jpa@johnpoe.com

Drawing Title

FOUNDATION PLAN

Approved: Project Director

Project Title

Renovate CLC Building 211 West

Location **Chillicothe, Ohio**

Date **Sept. 6, 2013**

Project No.

VA Project No. 538-107
JPA Project No. 11001.00

Building Number

211

Drawing Number

S100

Dwg. 48 of 132

Office of Construction and Facilities Management

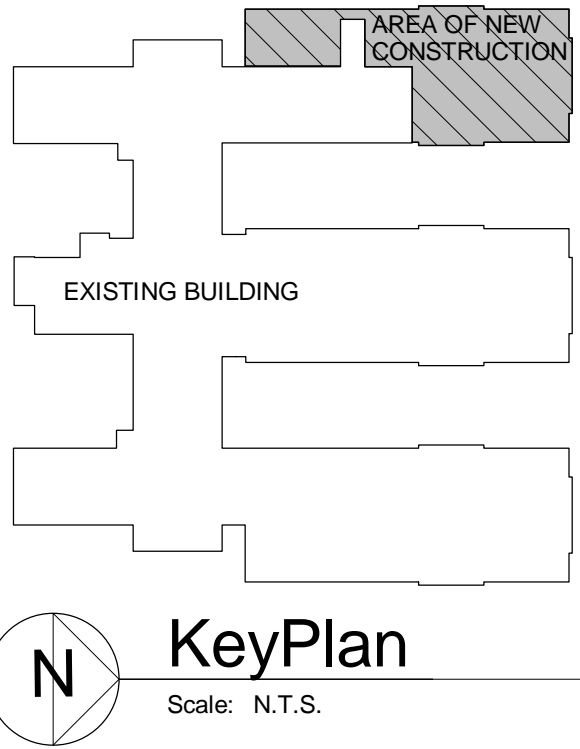
Department of Veterans Affairs

FULLY SPRINKLERED

- STEEL FRAMING NOTES:
- UNDIMENSIONED MEMBERS TYPICALLY ARE EQUALLY SPACED BETWEEN DIMENSIONED MEMBERS.
 - COORDINATE SIZES AND LOCATIONS OF ALL FLOOR OPENINGS/SLEEVES WITH ARCHITECTURAL AND MECHANICAL REQUIREMENTS. SEE TYPICAL FLOOR OPENING DETAILS.
 - FABRICATOR TO COMPLETE THE DESIGN OF ALL CONNECTIONS. SEE GENERAL NOTES AND PROJECT SPECIFICATIONS.
 - SHEAR CONNECTIONS AT GIRDERS TO COLUMNS ARE TO BE SHEAR THROUGH-PLATE CONNECTIONS. OTHER BEAM TO COLUMN CONNECTIONS CAN BE AISC SINGLE PLATE SHEAR CONNECTIONS TO COLUMNS (SEE NOTE 5) U.N.O. WITH THE MAXIMUM ROWS OF BOLTS = BEAM DEPTH IN INCHES DIVIDED BY 4 SPACED 3" MINIMUM O.C.
 - UNLESS INDICATED OTHERWISE SHEAR CONNECTIONS AT PURLINS TO GIRDERS MAY BE AISC SINGLE PLATE SHEAR CONNECTIONS WITH A MAXIMUM ECCENTRICITY OF 3" AND MINIMUM ROWS OF BOLTS = BEAM DEPTH IN INCHES DIVIDED BY 4, SPACED 3" MINIMUM O.C. SINGLE PLATE SHEAR CONNECTIONS SHALL HAVE HORIZONTAL SHORT SLOTTED HOLES TO THE SUPPORTED BEAM. STANDARD HOLES TO THE SUPPORTING GIRDER AND ONE SIDE MAY BE SHOP WELDED. AISC SINGLE ANGLE SHEAR CONNECTIONS MAY ALSO BE UTILIZED AT PURLIN TO GIRDER SHEAR CONNECTIONS.
 - FORCES INDICATED ON THE DRAWINGS ARE FACTORED FOR LRFD DESIGN. DESIGN BEAM CONNECTION FOR FORCES INDICATED ON THE PLANS. BRACING ELEVATIONS AND DETAILS MAY ALSO SHOW REQUIRED FORCES WHICH ARE ADDITIVE. FORCES ARE INDICATED AS:
A = AXIAL END REACTION, KIPS
V = VERTICAL END REACTION, KIPS
M = BENDING MOMENT KIP FT.
 - INDICATES DIRECTION OF DECK SPAN.
 - SCHEDULE ERECTION SEQUENCE AND/OR PROVIDE ADDITIONAL TEMPORARY VERTICAL BRACING SO THAT ALL PORTIONS OF THE STRUCTURAL FRAME ARE BRACED FOR LATERAL LOADS.
 - FOR BRICK LEDGE INFORMATION SEE S201.
 - COMPOSITE SHEAR CONNECTORS TO BE 3/4" DIA. HEADED STUDS, 4 1/2" LONG U.N.O. PROVIDE ADDITIONAL STUDS SO THAT THE MAXIMUM INSTALLED SPACING DOES NOT EXCEED 24" O.C., REGARDLESS OF QUANTITY INDICATED. IF NONE ARE INDICATED, PROVIDE AT 24" O.C. ON ALL BEAMS OVER 22 FEET LONG WITH CONCRETE SLABS.
 - W18X35 (16) - A SINGLE NUMBER GIVEN WITH A BEAM SIZE INDICATES TOTAL NUMBER OF STUDS EVENLY SPACED ALONG THE BEAM OR GIRDER. WHERE BEAMS FRAME PERPENDICULAR, SPACE QUANTITIES OF STUDS OUT EVENLY ALONG GIRDER BETWEEN INTERSECTING PURLINS/COLUMNS.
 - SCHEDULE ERECTION SEQUENCE AND/OR PROVIDE ADDITIONAL TEMPORARY VERTICAL BRACING SO THAT ALL PORTIONS OF THE STRUCTURAL FRAME ARE BRACED FOR LATERAL LOADS. HORIZONTAL DECK DIAPHRAGMS ARE TO BE COMPLETED BETWEEN STABILIZING BRACES PRIOR TO CONCRETE PLACEMENT.
 - FLOOR DECK IS TO BE CONTINUOUSLY SUPPORTED AT EACH END OF DECK SPANS. PROVIDE ADDITIONAL L3X3X1/4 DECK SUPPORT ANGLES WHERE REQUIRED.
 - ALL FRAMING CONNECTIONS, GROUTING OF COLUMN BASE PLATES, AND INSPECTIONS TO BE COMPLETED PRIOR TO CASTING SLAB.
 - SLABS ARE TO BE CAST LEVEL, WITH MINIMUM THICKNESS SHOWN ON DRAWINGS. PROVIDE AN ASSUMED EXTRA 1/2" OF CONCRETE TO ACCOUNT FOR METAL DECK AND BEAM DEFLECTION. PURLINS AND GIRDERS ARE UNSHORED DURING SLAB PLACEMENT. AFTER PLACEMENT, FINISH SLABS TO REQUIRED TOLERANCES, REFER TO SPECIFICATIONS.
 - CONTRACTOR IS RESPONSIBLE TO PROVIDE A FINISHED SLAB EDGE WHICH IS STRAIGHT AND TRUE AND ACCURATELY LOCATED RELATIVE TO FINISH WALL LINES. GAGES SHOWN FOR CLOSURE ANGLES ARE THE MINIMUM REQUIRED. HEAVIER GAGE, STRAPS AND/OR A RETURN LIP AT TOP OF ANGLE MAY BE USED AT CONTRACTORS OPTION. WELD CLOSURE ANGLES TO DECK/BEAM AT 12" MAX. O.C. OR AS REQUIRED TO PREVENT TORSIONAL DEFLECTION OF ANGLE.
 - ALL ANGLES/MEMBERS SUPPORTING THE BUILDING FAÇADE, ARCHITECTURAL WALLS OF MASONRY OR GLASS, AND ITEMS NOTED "MASONRY SUPPORT" OR "CFMF SUPPORT" ARE CONSIDERED "ADJUSTABLE ITEMS" AND ARE TO BE LOCATED WITH 3/8" OF THEIR DESIGN VERTICAL AND HORIZONTAL LOCATION RELATIVE TO THE ESTABLISHED FINISH WALL LINE, FINISH FLOOR LINE, AND MASONRY COURSING.

- DRAWING NOTES:
- REFER TO S001 SERIES DRAWINGS FOR GENERAL NOTES AND TYPICAL DETAILS.
 - REFER TO S300 SERIES DRAWINGS FOR FRAMING DETAILS.
 - REFER TO DRAWING S501 FOR STEEL COLUMN SCHEDULE.
 - REFER TO DRAWING S401 FOR VERTICAL BRACING ELEVATIONS AND DETAILS.
 - REFER TO DRAWING S002 FOR TYPICAL BEAM POCKET DETAIL.
 - COORDINATE DUCT AND FIRE DAMPER SLEEVED OPENINGS WITH ARCHITECTURAL AND MECHANICAL REQUIREMENTS.

- KEY NOTES: (X)
- PROPOSED DAMPER/DUCT LOCATION. OPENING LOCATION AND SLAB FRAMING MUST BE COORDINATED WITH STRUCTURAL ENGINEER PRIOR TO SLAB PLACEMENT.
 - EMBED PLATE CONNECTION ABOVE DOORWAY. REFER TO TYPICAL EMBEDDED PLATE DETAIL ON S003.

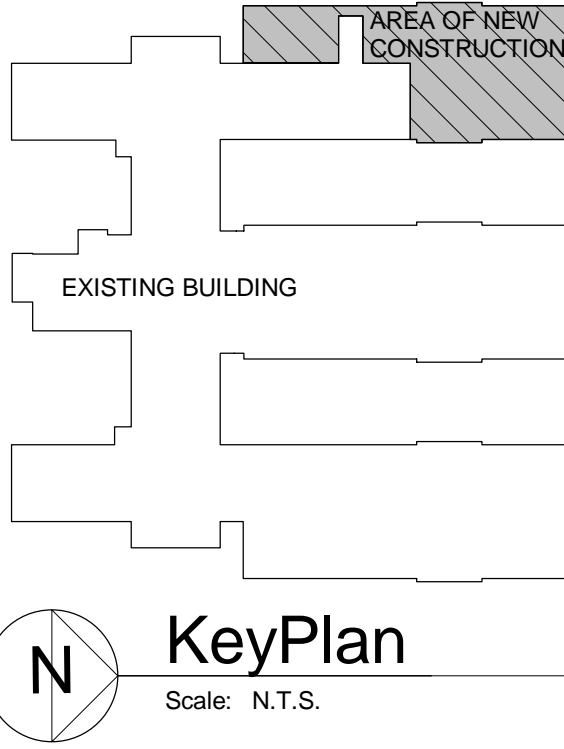


<div>1</div> <div>Bid Documents</div> <div>9/6/13</div> <div>Date</div>		<div>CONSULTANTS:</div> <div><div>THP</div><div>THP Limited, Inc. 100 East Eighth Street Cincinnati, Ohio 45202 Phone: 513.241.3222 Fax: 513.241.2981 www.thpltd.com</div></div>		<div>ARCHITECT/ENGINEERS:</div> <div><div>JOHN POE ARCHITECTS</div><div>116 EAST THIRD STREET DAYTON, OHIO 45402-2130 937.461.3280 PHONE 937.461.0280 FAX jpa@johnpoe.com</div></div>		<div>Drawing Title</div> <div>LEVEL 1 FRAMING PLAN</div>		<div>Project Title</div> <div>Renovate CLC Building 211 West</div>		<div>Project No.</div> <div>VA Project No. 538-107 JPA Project No. 11001.00</div>		<div>Office of Construction and Facilities Management</div>	
								<div>Building Number</div> <div>211</div>		<div>Department of Veterans Affairs</div>			
								<div>Location</div> <div>Chillicothe, Ohio</div>		<div>Drawings Number</div> <div>S101</div>			
								<div>Date</div> <div>Sept. 6, 2013</div>		<div>Checked</div> <div>MCC</div>			
								<div>Approved: Project Director</div>		<div>Drawn</div> <div>MRB</div>			

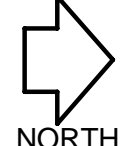
FULLY SPRINKLERED

- STEEL FRAMING NOTES:
- UNDIMENSIONED MEMBERS TYPICALLY ARE EQUALLY SPACED BETWEEN DIMENSIONED MEMBERS.
 - COORDINATE SIZES AND LOCATIONS OF ALL FLOOR OPENINGS/SLEEVES WITH ARCHITECTURAL AND MECHANICAL REQUIREMENTS. SEE TYPICAL FLOOR OPENING DETAILS.
 - FABRICATOR TO COMPLETE THE DESIGN OF ALL CONNECTIONS. SEE GENERAL NOTES AND PROJECT SPECIFICATIONS.
 - SHEAR CONNECTIONS AT GIRDERS TO COLUMNS ARE TO BE SHEAR THROUGH-PLATE CONNECTIONS. OTHER BEAM TO COLUMN CONNECTIONS CAN BE AISI SINGLE PLATE SHEAR CONNECTIONS TO COLUMNS (SEE NOTE 9) U.N.O. WITH THE MAXIMUM ROWS OF BOLTS = BEAM DEPTH IN INCHES DIVIDED BY 4 SPACED 3" MINIMUM O.C.
 - UNLESS INDICATED OTHERWISE SHEAR CONNECTIONS AT PURLINS TO GIRDERS MAY BE AISI SINGLE PLATE SHEAR CONNECTIONS WITH A MAXIMUM ECCENTRICITY OF 3" AND MINIMUM ROWS OF BOLTS = BEAM DEPTH IN INCHES DIVIDED BY 4, SPACED 3" MINIMUM O.C. SINGLE PLATE SHEAR CONNECTIONS SHALL HAVE HORIZONTAL SHORT SLOTTED HOLES TO THE SUPPORTED BEAM. STANDARD HOLES TO THE SUPPORTING GIRDER AND ONE SIDE MAY BE SHOP WELDED. AISI SINGLE ANGLE SHEAR CONNECTIONS MAY ALSO BE UTILIZED AT PURLIN TO GIRDER SHEAR CONNECTIONS.
 - FORCES INDICATED ON THE DRAWINGS ARE FACTORED FOR LRFD DESIGN. DESIGN BEAM CONNECTION FOR FORCES INDICATED ON THE PLANS. BRACING ELEVATIONS AND DETAILS MAY ALSO SHOW REQUIRED FORCES WHICH ARE ADDITIVE. FORCES ARE INDICATED AS:
A = AXIAL END REACTION, KIPS
V = VERTICAL END REACTION, KIPS
M = BENDING MOMENT KIP FT.
 - INDICATES DIRECTION OF DECK SPAN.
 - SCHEDULE ERECTION SEQUENCE AND/OR PROVIDE ADDITIONAL TEMPORARY VERTICAL BRACING SO THAT ALL PORTIONS OF THE STRUCTURAL FRAME ARE BRACED FOR LATERAL LOADS.
 - FOR BRICK LEDGE INFORMATION SEE S201.
 - COMPOSITE SHEAR CONNECTORS TO BE 3/4" DIA. HEADED STUDS, 4 1/2" LONG U.N.O. PROVIDE ADDITIONAL STUDS SO THAT THE MAXIMUM INSTALLED SPACING DOES NOT EXCEED 24" O.C., REGARDLESS OF QUANTITY INDICATED. IF NONE ARE INDICATED, PROVIDE AT 24" O.C. ON ALL BEAMS OVER 22 FEET LONG WITH CONCRETE SLABS.
 - W18X35 (16) - A SINGLE NUMBER GIVEN WITH A BEAM SIZE INDICATES TOTAL NUMBER OF STUDS EVENLY SPACED ALONG THE BEAM OR GIRDER. WHERE BEAMS FRAME PERPENDICULAR, SPACE QUANTITIES OF STUDS OUT EVENLY ALONG GIRDER BETWEEN INTERSECTING PURLINS/COLUMNS.
 - SCHEDULE ERECTION SEQUENCE AND/OR PROVIDE ADDITIONAL TEMPORARY VERTICAL BRACING SO THAT ALL PORTIONS OF THE STRUCTURAL FRAME ARE BRACED FOR LATERAL LOADS. HORIZONTAL DECK DIAPHRAGMS ARE TO BE COMPLETED BETWEEN STABILIZING BRACES PRIOR TO CONCRETE PLACEMENT.
 - FLOOR DECK IS TO BE CONTINUOUSLY SUPPORTED AT EACH END OF DECK SPANS. PROVIDE ADDITIONAL L3X3X1/4 DECK SUPPORT ANGLES WHERE REQUIRED.
 - ALL FRAMING CONNECTIONS, GROUTING OF COLUMN BASE PLATES, AND INSPECTIONS TO BE COMPLETED PRIOR TO CASTING SLAB.
 - SLABS ARE TO BE CAST LEVEL, WITH MINIMUM THICKNESS SHOWN ON DRAWINGS. PROVIDE AN ASSUMED EXTRA 1/2" OF CONCRETE TO ACCOUNT FOR METAL DECK AND BEAM DEFLECTION. PURLINS AND GIRDERS ARE UNSHORED DURING SLAB PLACEMENT. AFTER PLACEMENT, FINISH SLABS TO REQUIRED TOLERANCES, REFER TO SPECIFICATIONS.
 - CONTRACTOR IS RESPONSIBLE TO PROVIDE A FINISHED SLAB EDGE WHICH IS STRAIGHT AND TRUE AND ACCURATELY LOCATED RELATIVE TO FINISH WALL LINES. GAGES SHOWN FOR CLOSURE ANGLES ARE THE MINIMUM REQUIRED. HEAVIER GAGE, STRAPS AND/OR A RETURN LIP AT TOP OF ANGLE MAY BE USED AT CONTRACTORS OPTION. WELD CLOSURE ANGLES TO DECK/BEAM AT 12" MAX. O.C. OR AS REQUIRED TO PREVENT TORSIONAL DEFLECTION OF ANGLE.
 - ALL ANGLES/MEMBERS SUPPORTING THE BUILDING FACADE, ARCHITECTURAL WALLS OF MASONRY OR GLASS, AND ITEMS NOTED "MASONRY SUPPORT OR CMF SUPPORT" ARE CONSIDERED "ADJUSTABLE ITEMS" AND ARE TO BE LOCATED WITH 3/8" OF THEIR DESIGN VERTICAL AND HORIZONTAL LOCATION RELATIVE TO THE ESTABLISHED FINISH WALL LINE, FINISH FLOOR LINE, AND MASONRY COURSING.

- DRAWING NOTES:
- REFER TO S001 SERIES DRAWINGS FOR GENERAL NOTES AND TYPICAL DETAILS.
 - REFER TO S300 SERIES DRAWINGS FOR FRAMING DETAILS.
 - REFER TO DRAWING S501 FOR STEEL COLUMN SCHEDULE.
 - REFER TO DRAWING S401 FOR VERTICAL BRACING ELEVATIONS AND DETAILS.
 - REFER TO DRAWING S002 FOR TYPICAL BEAM POCKET DETAIL.
 - COORDINATE DUCT AND FIRE DAMPER SLEEVED OPENINGS WITH ARCHITECTURAL AND MECHANICAL REQUIREMENTS.



1 LEVEL 2 FRAMING PLAN
1/8" = 1'-0"



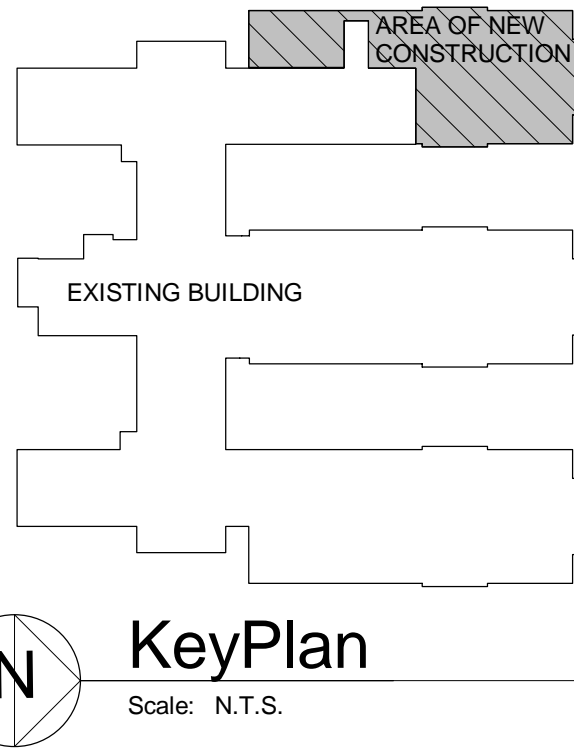
<div>1</div> <div>Bid Documents</div> <div>9/6/13</div> <div>Date</div>		<div>CONSULTANTS:</div> <div><div>THP</div><div>THP Limited, Inc. 100 East Eighth Street Cincinnati, Ohio 45202 Phone: 513.241.3222 Fax: 513.241.2981 www.thpltd.com</div></div>		<div><div>STATE OF OHIO</div><div>FRANK JOSEPH ELLERT</div><div>E-50492</div><div>REGISTERED PROFESSIONAL ENGINEER</div></div>		<div>ARCHITECT/ENGINEERS:</div> <div><div>JOHN POE ARCHITECTS</div><div><div>116 EAST THIRD STREET DAYTON, OHIO 45402-2130</div><div>937.461.3280 PHONE 937.461.0280 FAX jpo@johnpoe.com</div></div></div>		<div>Drawing Title</div> <div>LEVEL 2 FRAMING PLAN</div> <div>Approved: Project Director</div>		<div>Project Title</div> <div>Renovate CLC Building 211 West</div> <div>Location</div> <div>Chillicothe, Ohio</div> <div>Date</div> <div>Sept. 6, 2013</div> <div>Checked</div> <div>MCC</div> <div>Drawn</div> <div>MRB</div>		<div>Project No.</div> <div>VA Project No. 538-107 JPA Project No. 11001.00</div> <div>Building Number</div> <div>211</div> <div>Drawing Number</div> <div>S102</div> <div>Dwg. 50 of 132</div>		<div>Office of Construction and Facilities Management</div> <div>Department of Veterans Affairs</div>	
-------------------------------------------------------------------------	--	------------------------------------------------------------------------------------------------------------------------------------------------------------------------------------------------------	--	--------------------------------------------------------------------------------------------------------------------------------	--	----------------------------------------------------------------------------------------------------------------------------------------------------------------------------------------------------------------------------	--	------------------------------------------------------------------------------------------------	--	------------------------------------------------------------------------------------------------------------------------------------------------------------------------------------------------------------------------------------	--	-----------------------------------------------------------------------------------------------------------------------------------------------------------------------------------------------------	--	-----------------------------------------------------------------------------------------------------------------------	--

FULLY SPRINKLERED

- STEEL FRAMING NOTES:
- UNDIMENSIONED MEMBERS TYPICALLY ARE EQUALLY SPACED BETWEEN DIMENSIONED MEMBERS.
 - COORDINATE SIZES AND LOCATIONS OF ALL FLOOR OPENINGS/SLEEVES WITH ARCHITECTURAL AND MECHANICAL REQUIREMENTS. SEE TYPICAL FLOOR OPENING DETAILS.
 - FABRICATOR TO COMPLETE THE DESIGN OF ALL CONNECTIONS. SEE GENERAL NOTES AND PROJECT SPECIFICATIONS.
 - SHEAR CONNECTIONS AT GIRDERS TO COLUMNS ARE TO BE SHEAR THROUGH-PLATE CONNECTIONS. OTHER BEAM TO COLUMN CONNECTIONS CAN BE AISC SINGLE PLATE SHEAR CONNECTIONS TO COLUMNS (SEE NOTE 9) U.N.O. WITH THE MAXIMUM ROWS OF BOLTS = BEAM DEPTH IN INCHES DIVIDED BY 4 SPACED 3" MINIMUM O.C.
 - UNLESS INDICATED OTHERWISE SHEAR CONNECTIONS AT PURLINS TO GIRDERS MAY BE AISC SINGLE PLATE SHEAR CONNECTIONS WITH A MAXIMUM ECCENTRICITY OF 3" AND MINIMUM ROWS OF BOLTS = BEAM DEPTH IN INCHES DIVIDED BY 4 SPACED 3" MINIMUM O.C. SINGLE PLATE SHEAR CONNECTIONS SHALL HAVE HORIZONTAL SHORT SLOTTED HOLES TO THE SUPPORTED BEAM. STANDARD HOLES TO THE SUPPORTING GIRDER AND ONE SIDE MAY BE SHOP WELDED. AISC SINGLE ANGLE SHEAR CONNECTIONS MAY ALSO BE UTILIZED AT PURLIN TO GIRDER SHEAR CONNECTIONS.
 - FORCES INDICATED ON THE DRAWINGS ARE FACTORED FOR LRFD DESIGN. DESIGN BEAM CONNECTION FOR FORCES INDICATED ON THE PLANS. BRACING ELEVATIONS AND DETAILS MAY ALSO SHOW REQUIRED FORCES WHICH ARE ADDITIVE. FORCES ARE INDICATED AS:
A = AXIAL END REACTION, KIPS
V = VERTICAL END REACTION, KIPS
M = BENDING MOMENT KIP FT
 - INDICATES DIRECTION OF DECK SPAN.
 - SCHEDULE ERECTION SEQUENCE AND/OR PROVIDE ADDITIONAL TEMPORARY VERTICAL BRACING SO THAT ALL PORTIONS OF THE STRUCTURAL FRAME ARE BRACED FOR LATERAL LOADS.
 - FOR BRICK LEDGE INFORMATION SEE S201.
 - COMPOSITE SHEAR CONNECTORS TO BE 3/4" DIA. HEADED STUDS, 4 1/2" LONG U.N.O. PROVIDE ADDITIONAL STUDS SO THAT THE MAXIMUM INSTALLED SPACING DOES NOT EXCEED 24" O.C., REGARDLESS OF QUANTITY INDICATED. IF NONE ARE INDICATED, PROVIDE AT 24" O.C. ON ALL BEAMS OVER 22 FEET LONG WITH CONCRETE SLABS.
 - W18X35 (16) - A SINGLE NUMBER GIVEN WITH A BEAM SIZE INDICATES TOTAL NUMBER OF STUDS EVENLY SPACED ALONG THE BEAM OR GIRDER. WHERE BEAMS FRAME PERPENDICULAR, SPACE QUANTITIES OF STUDS OUT EVENLY ALONG GIRDER BETWEEN INTERSECTING PURLINS/COLUMNS.
 - SCHEDULE ERECTION SEQUENCE AND/OR PROVIDE ADDITIONAL TEMPORARY VERTICAL BRACING SO THAT ALL PORTIONS OF THE STRUCTURAL FRAME ARE BRACED FOR LATERAL LOADS. HORIZONTAL DECK DIAPHRAGMS ARE TO BE COMPLETED BETWEEN STABILIZING BRACES PRIOR TO CONCRETE PLACEMENT.
 - FLOOR DECK IS TO BE CONTINUOUSLY SUPPORTED AT EACH END OF DECK SPANS. PROVIDE ADDITIONAL L3X3X1/4 DECK SUPPORT ANGLES WHERE REQUIRED.
 - ALL FRAMING CONNECTIONS, GROUTING OF COLUMN BASE PLATES, AND INSPECTIONS TO BE COMPLETED PRIOR TO CASTING SLAB.
 - SLABS ARE TO BE CAST LEVEL, WITH MINIMUM THICKNESS SHOWN ON DRAWINGS. PROVIDE AN ASSUMED EXTRA 1/4" OF CONCRETE TO ACCOUNT FOR METAL DECK AND BEAM DEFLECTION. PURLINS AND GIRDERS ARE UNSHORED DURING SLAB PLACEMENT. AFTER PLACEMENT, FINISH SLABS TO REQUIRED TOLERANCES, REFER TO SPECIFICATIONS.
 - CONTRACTOR IS RESPONSIBLE TO PROVIDE A FINISHED SLAB EDGE WHICH IS STRAIGHT AND TRUE AND ACCURATELY LOCATED RELATIVE TO FINISH WALL LINES. GAGES SHOWN FOR CLOSURE ANGLES ARE THE MINIMUM REQUIRED. HEAVIER GAGE, STRAPS AND/OR A RETURN LIP AT TOP OF ANGLE MAY BE USED AT CONTRACTORS OPTION. WELD CLOSURE ANGLES TO DECK/BEAM AT 12" MAX. O.C. OR AS REQUIRED TO PREVENT TORSIONAL DEFLECTION OF ANGLE.
 - ALL ANGLES/MEMBERS SUPPORTING THE BUILDING FACADE, ARCHITECTURAL WALLS OF MASONRY OR GLASS, AND ITEMS NOTED "MASONRY SUPPORT OR CMF SUPPORT" ARE CONSIDERED "ADJUSTABLE ITEMS" AND ARE TO BE LOCATED WITH 3/8" OF THEIR DESIGN VERTICAL AND HORIZONTAL LOCATION RELATIVE TO THE ESTABLISHED FINISH WALL LINE, FINISH FLOOR LINE, AND MASONRY COURSING.

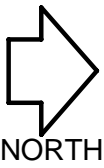
- DRAWING NOTES:
- REFER TO S001 SERIES DRAWINGS FOR GENERAL NOTES AND TYPICAL DETAILS.
 - REFER TO S300 SERIES DRAWINGS FOR FRAMING DETAILS.
 - REFER TO DRAWING S501 FOR STEEL COLUMN SCHEDULE.
 - REFER TO DRAWING S401 FOR VERTICAL BRACING ELEVATIONS AND DETAILS.
 - REFER TO DRAWING S002 FOR TYPICAL BEAM POCKET DETAIL.
 - COORDINATE DUCT AND FIRE DAMPER SLEEVED OPENINGS WITH ARCHITECTURAL AND MECHANICAL REQUIREMENTS.

- KEY NOTES: (X)
- PROPOSED DAMPER/DUCT LOCATION, OPENING LOCATION AND SLAB FRAMING MUST BE COORDINATED WITH STRUCTURAL ENGINEER PRIOR TO SLAB PLACEMENT.
 - EMBED PLATE CONNECTION ABOVE DOORWAY. REFER TO TYPICAL EMBEDDED PLATE DETAIL ON S003.



<div>1</div> <div>Bid Documents</div> <div>9/6/13</div> <div>Date</div>		<div>CONSULTANTS:</div> <div><div>THP</div><div>THP Limited, Inc. 100 East Eighth Street Cincinnati, Ohio 45202 Phone: 513.241.3222 Fax: 513.241.2981 www.thpltd.com</div></div>		<div>ARCHITECT/ENGINEERS:</div> <div><div>JOHN POE ARCHITECTS</div><div>116 EAST THIRD STREET DAYTON, OHIO 45402-2130 937.461.3280 PHONE 937.461.0280 FAX jpa@johnpoe.com</div></div>		<div>Drawing Title</div> <div>ATTIC LEVEL FRAMING PLAN</div> <div>Approved: Project Director</div>		<div>Project Title</div> <div>Renovate CLC Building 211 West</div> <div>Location</div> <div>Chillicothe, Ohio</div> <div>Date</div> <div>Sept. 6, 2013</div> <div>Checked</div> <div>MCC</div> <div>Drawn</div> <div>MRB</div>		<div>Project No.</div> <div>VA Project No. 538-107 JPA Project No. 11001.00</div> <div>Building Number</div> <div>211</div> <div>Drawings Number</div> <div>S103</div> <div>Dwg. 51 of 132</div>		<div>Office of Construction and Facilities Management</div> <div>Department of Veterans Affairs</div>	
-------------------------------------------------------------------------	--	------------------------------------------------------------------------------------------------------------------------------------------------------------------------------------------------------	--	-----------------------------------------------------------------------------------------------------------------------------------------------------------------------------------------------------------	--	----------------------------------------------------------------------------------------------------	--	------------------------------------------------------------------------------------------------------------------------------------------------------------------------------------------------------------------------------------	--	------------------------------------------------------------------------------------------------------------------------------------------------------------------------------------------------------	--	-----------------------------------------------------------------------------------------------------------------------	--

1 ATTIC LEVEL FRAMING PLAN
1/8" = 1'-0"



DRAWING NOTES:

1. LAYOUT SHOWN IS FOR SCHEMATIC PURPOSES ONLY. FINAL FRAMING LAYOUT IS THE RESPONSIBILITY OF THE CFMF FABRICATOR.

2. SIZES AND GAGES SHOWN ARE MINIMUM REQUIRED FOR THE SCHEMATIC LAYOUT SHOWN. FINAL SIZES AND GAGES TO BE PROVIDED BY CFMF FABRICATOR.

3. CFMF FABRICATOR TO DESIGN ALL CONNECTIONS. REFER TO ARCHITECTURAL DRAWINGS FOR WORK POINT AND ROOF SLOPE INFORMATION AND FOR EXTENT OF EXISTING ROOFING DEMOLITION AND REMO

CFMF ROOF FRAMING KEY NOTES: (X)

1. EXISTING ROOF TO REMAIN.

2. 10" 14 GA. MINIMUM CFMF RAFTERS AT 24" O.C. PROVIDE BRIDGING AS REQUIRED.

3. CFMF TRUSSES AT 24" O.C. PROVIDE BRIDGING AS REQUIRED.

4. CFMF TRUSS TO SUPPORT GABLE RIDGE.

5. 16" 12 GA. MINIMUM I OR BOXED SHAPED CFMF RIDGE MEMBER.

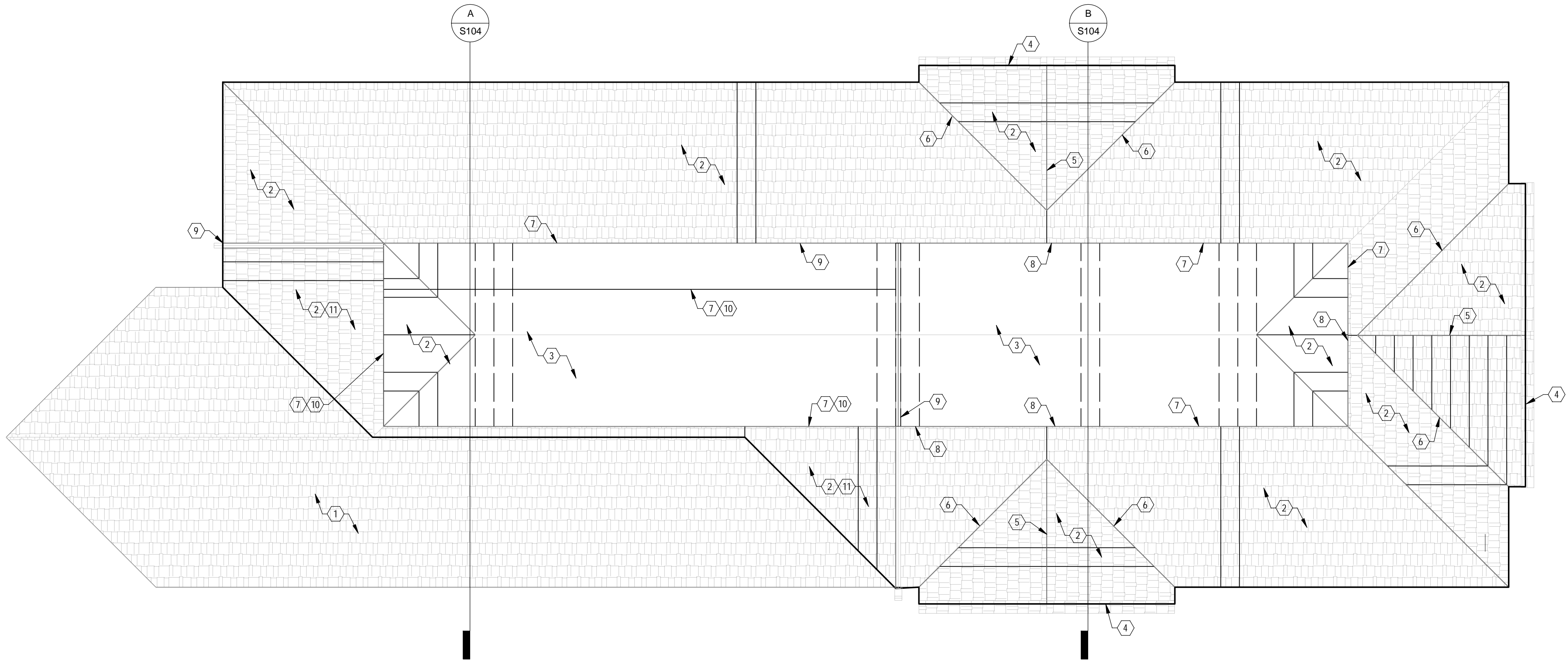
6. 16" 12 GA. MINIMUM I OR BOXED SHAPED CFMF VALLEY MEMBER.

7. CFMF WALL WITH 6" 16 GA. MINIMUM STUDS AT 24" O.C. PROVIDE STRAP BRACING AS REQUIRED.

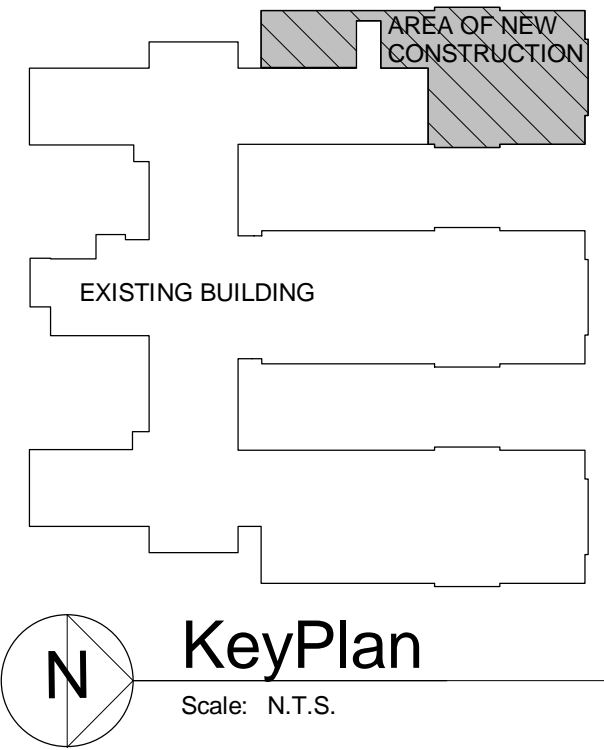
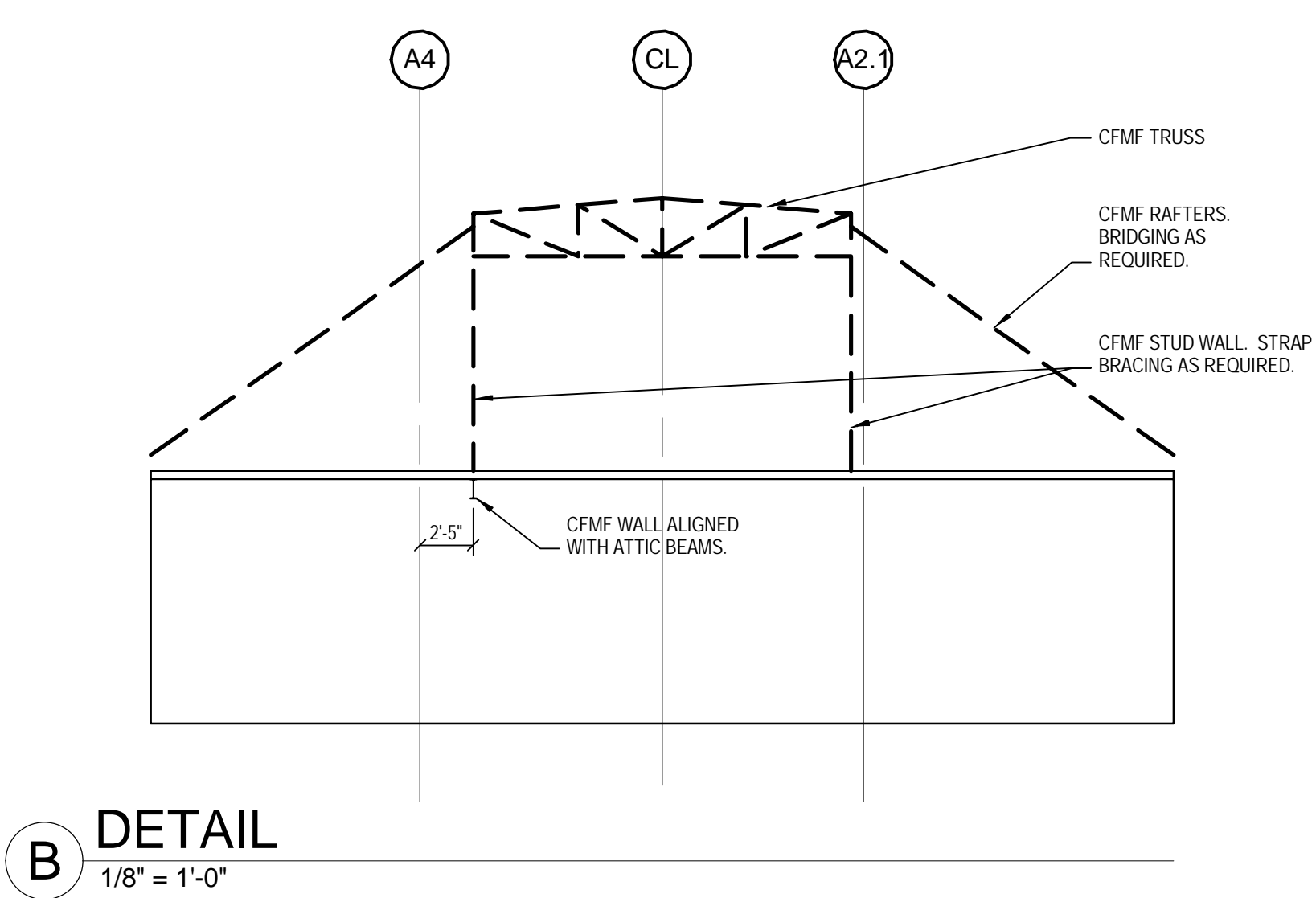
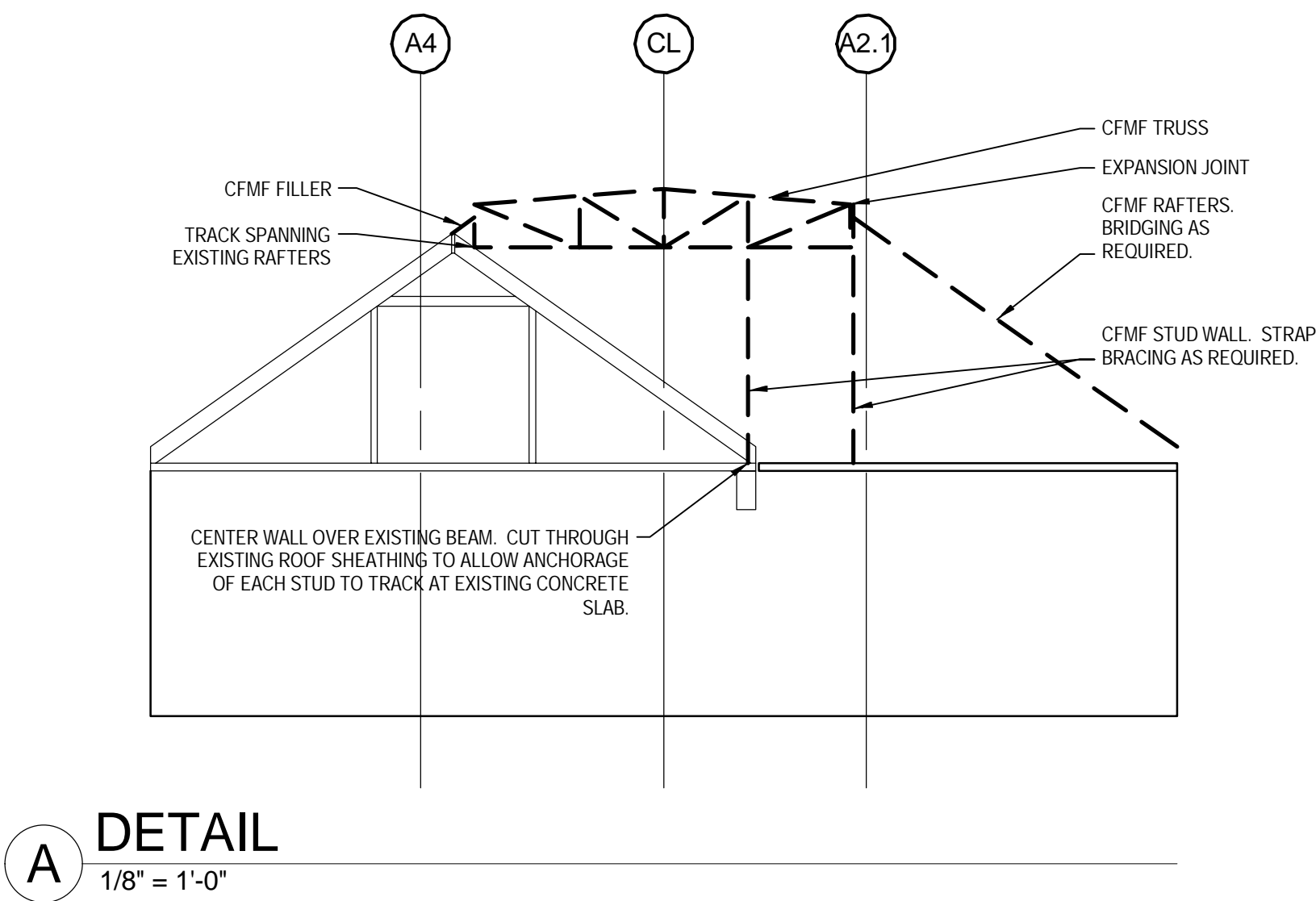
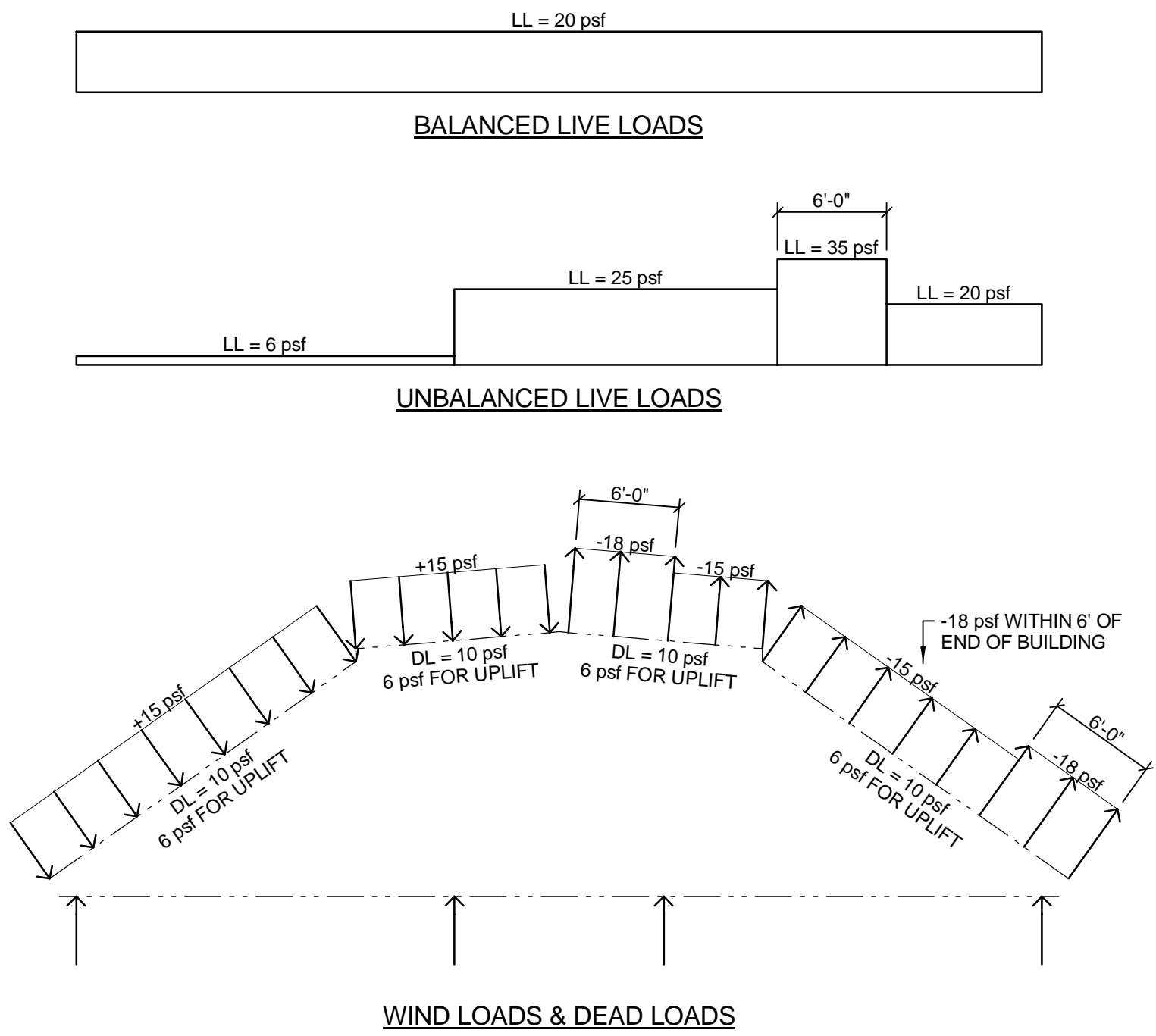
8. PROVIDE BOXED HEADER AT WALL OPENING. COORDINATE OPENING SIZE AND LOCATION WITH MECHANICAL EQUIPMENT AND DUCTWORK.

9. EXPANSION JOINT. REFER TO ARCH.

10. CUT THROUGH EXISTING ROOF SHEATHING TO ALLOW ANCHORAGE OF WALL STUDS TO TRACK ALONG EXISTING CONCRETE SLAB.



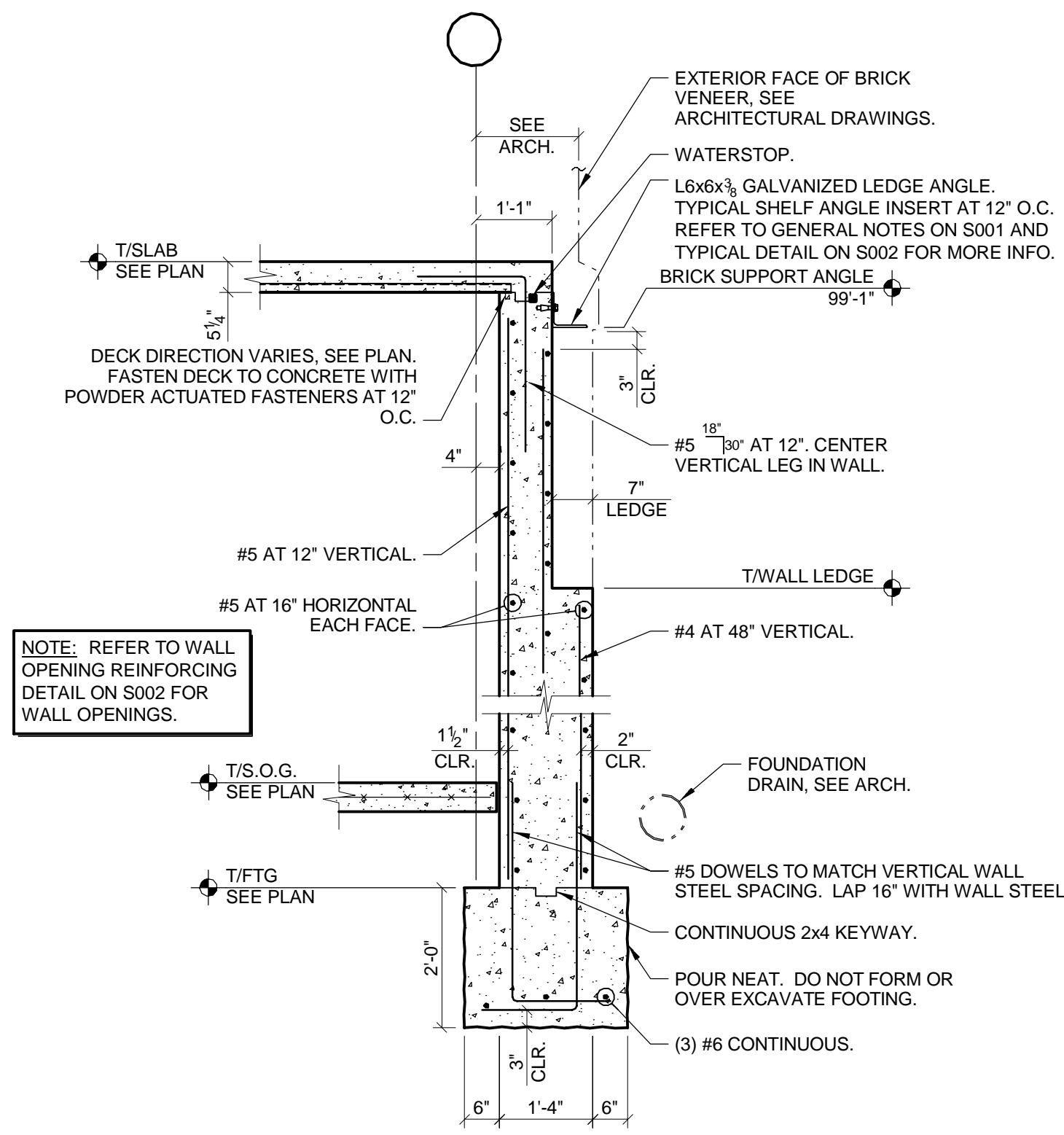
1 SCHEMATIC ROOF FRAMING PLAN
1/8" = 1'-0"



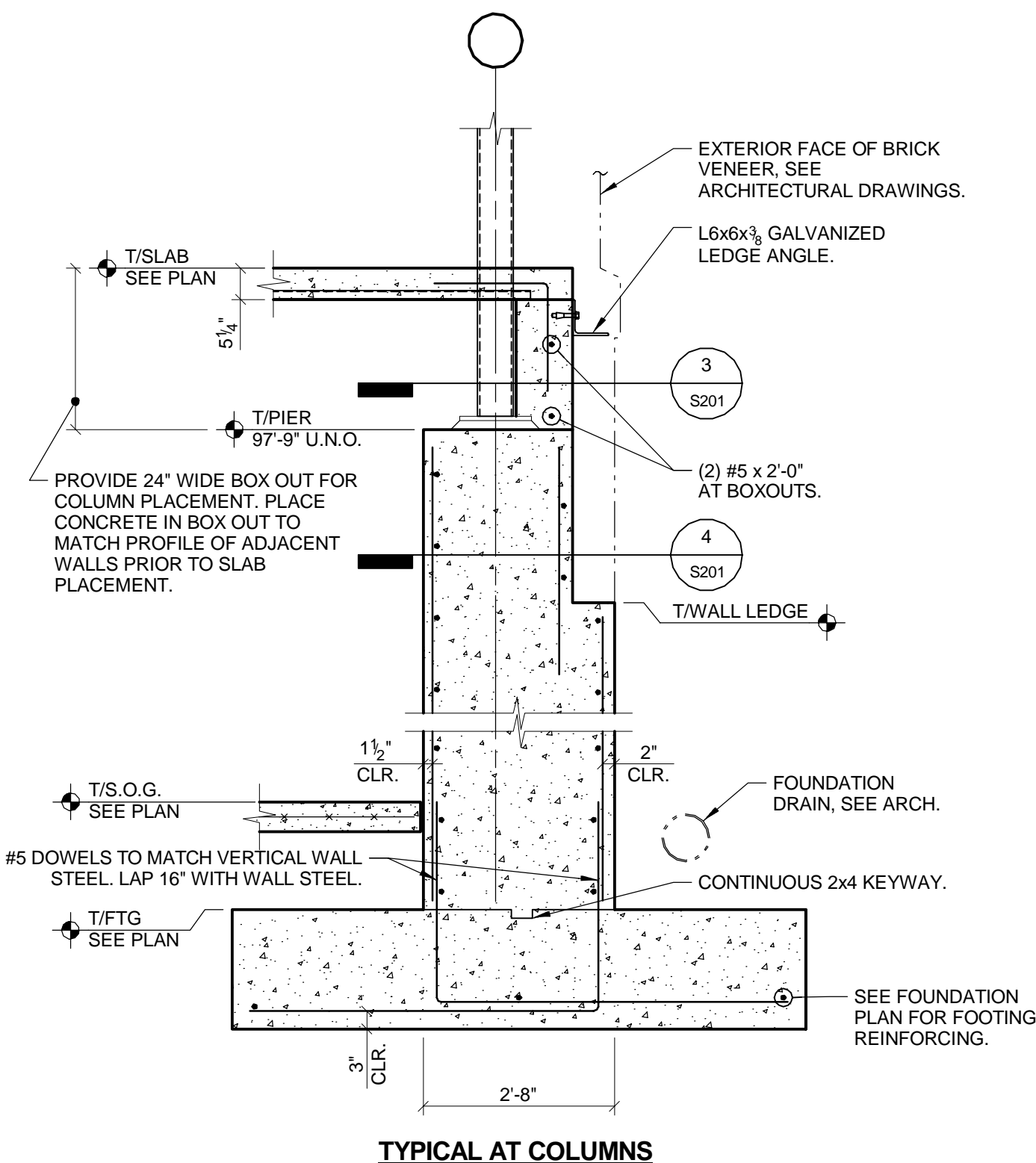
			CONSULTANTS:				ARCHITECT/ENGINEERS:		Drawing Title		Project Title		Project No.		Office of Construction and Facilities Management			
			<div><div>THP</div><div>THP Limited, Inc. 100 East Eighth Street Cincinnati, Ohio 45202 Phone: 513.241.3222 Fax: 513.241.2981 www.thpltd.com</div></div>				<div><div>STATE OF OHIO</div><div>FRANK JOSEPH ELLERT E-50492 REGISTERED PROFESSIONAL ENGINEER</div></div>		<div><div>JOHN POE ARCHITECTS</div><div><div></div><div>116 EAST THIRD STREET DAYTON, OHIO 45402-2130</div><div>937 461 3280 PHONE 937 461 0280 FAX jpa@johnpoe.com</div></div></div>		ROOF FRAMING PLAN		Renovate CLC Building 211 West		538-107 11001.00		Office of Construction and Facilities Management	
									Approved: Project Director		Location Chillicothe, Ohio		Building Number 211		Drawing Number			
											Date Sept. 6, 2013		Checked MCC		Drawn MRB			
															S104			
															Dwg. 52 of 132			
															Department of Veterans Affairs			

1	Bid Documents	9/6/13
Revisions		Date

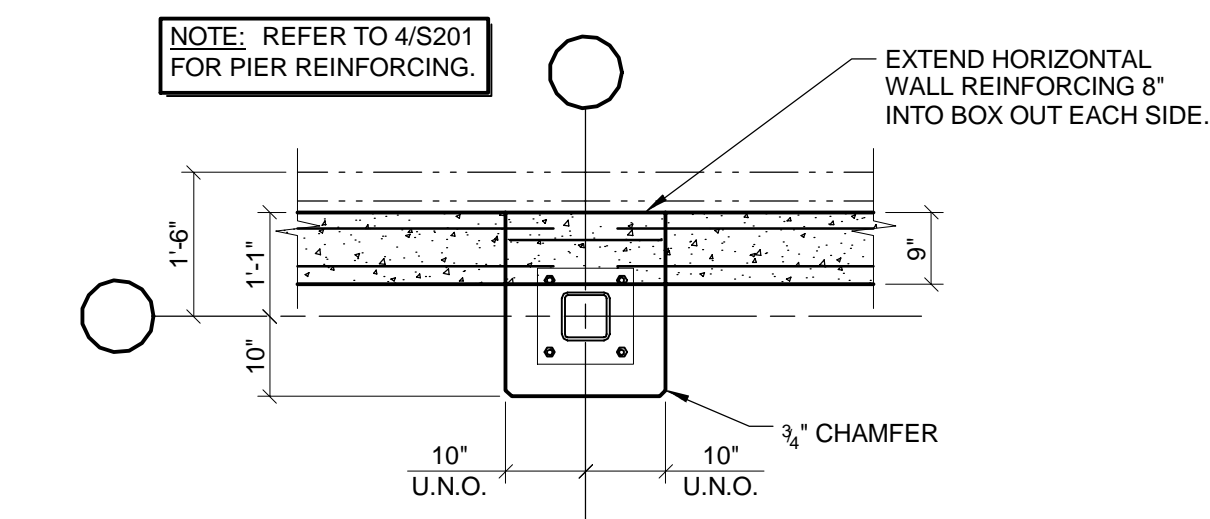
FULLY SPRINKLERED



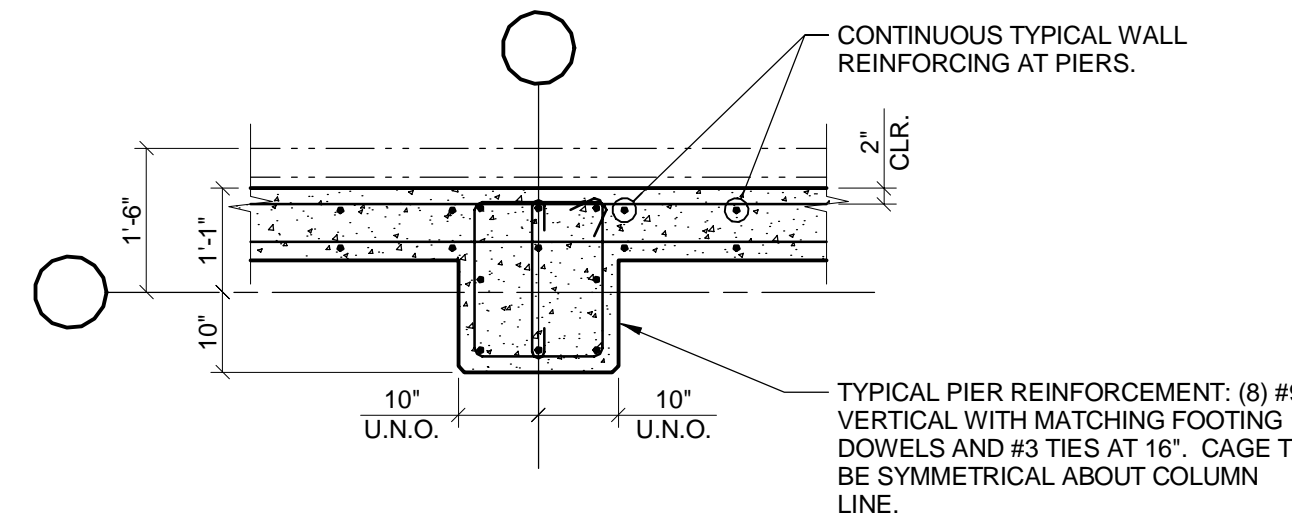
1
1/2" = 1'-0"



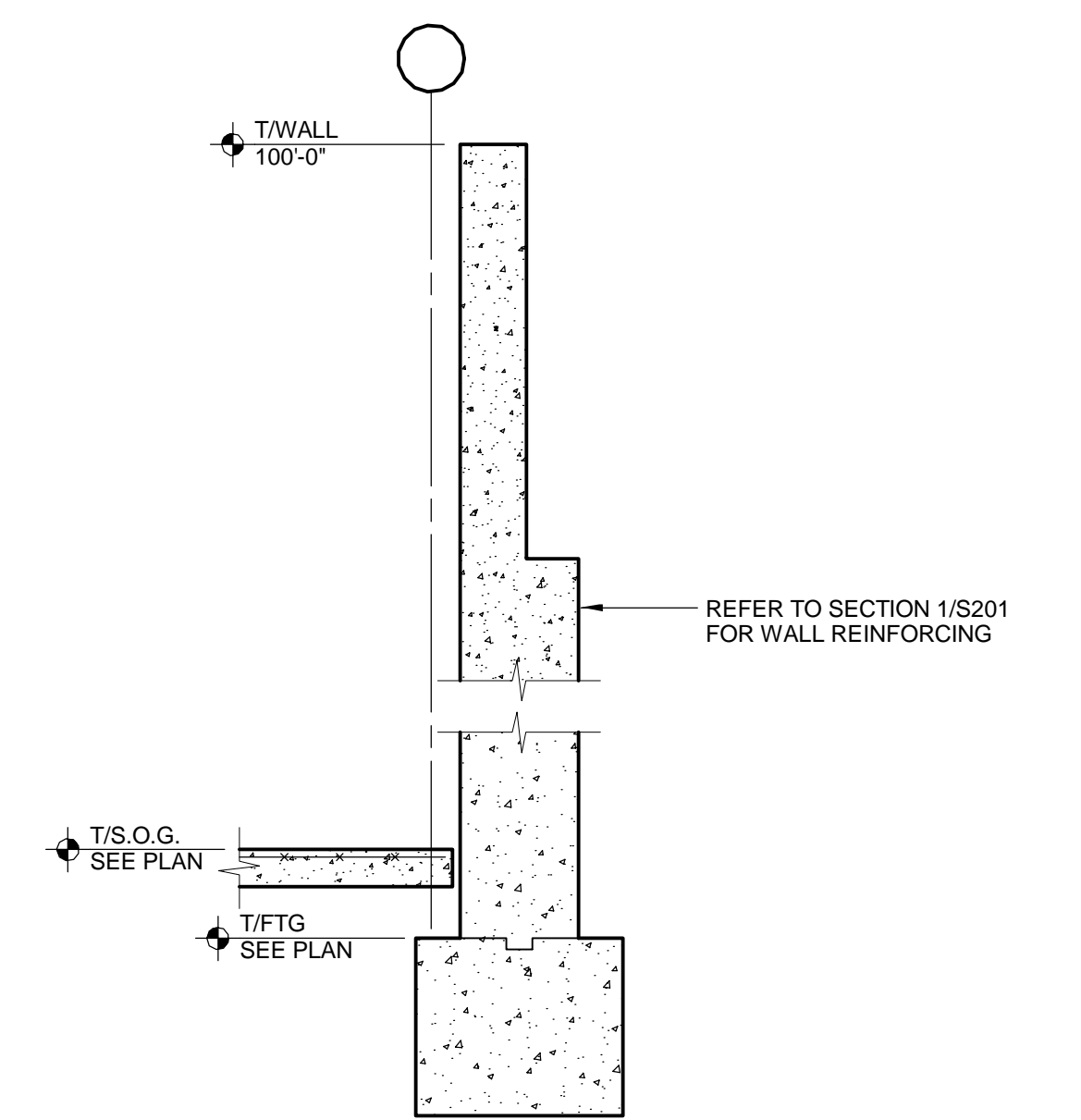
2
1/2" = 1'-0"



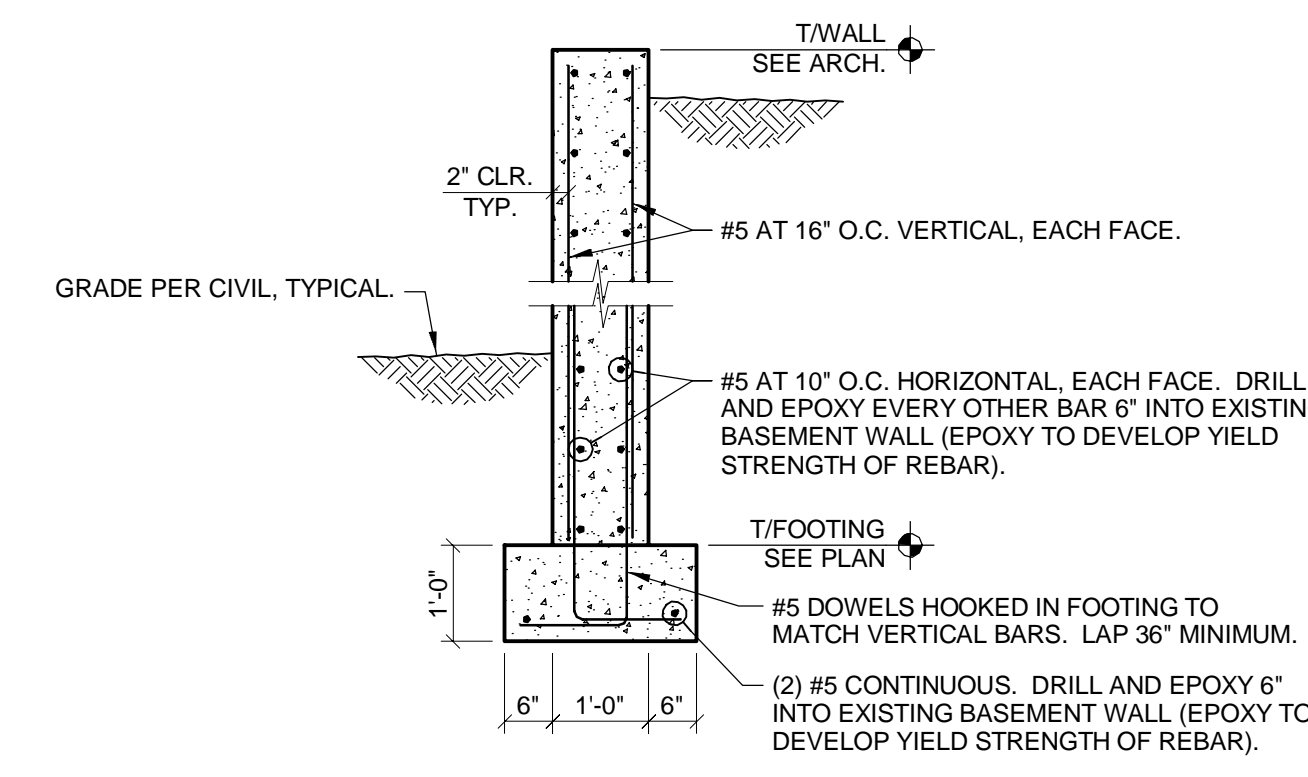
3
1/2" = 1'-0"



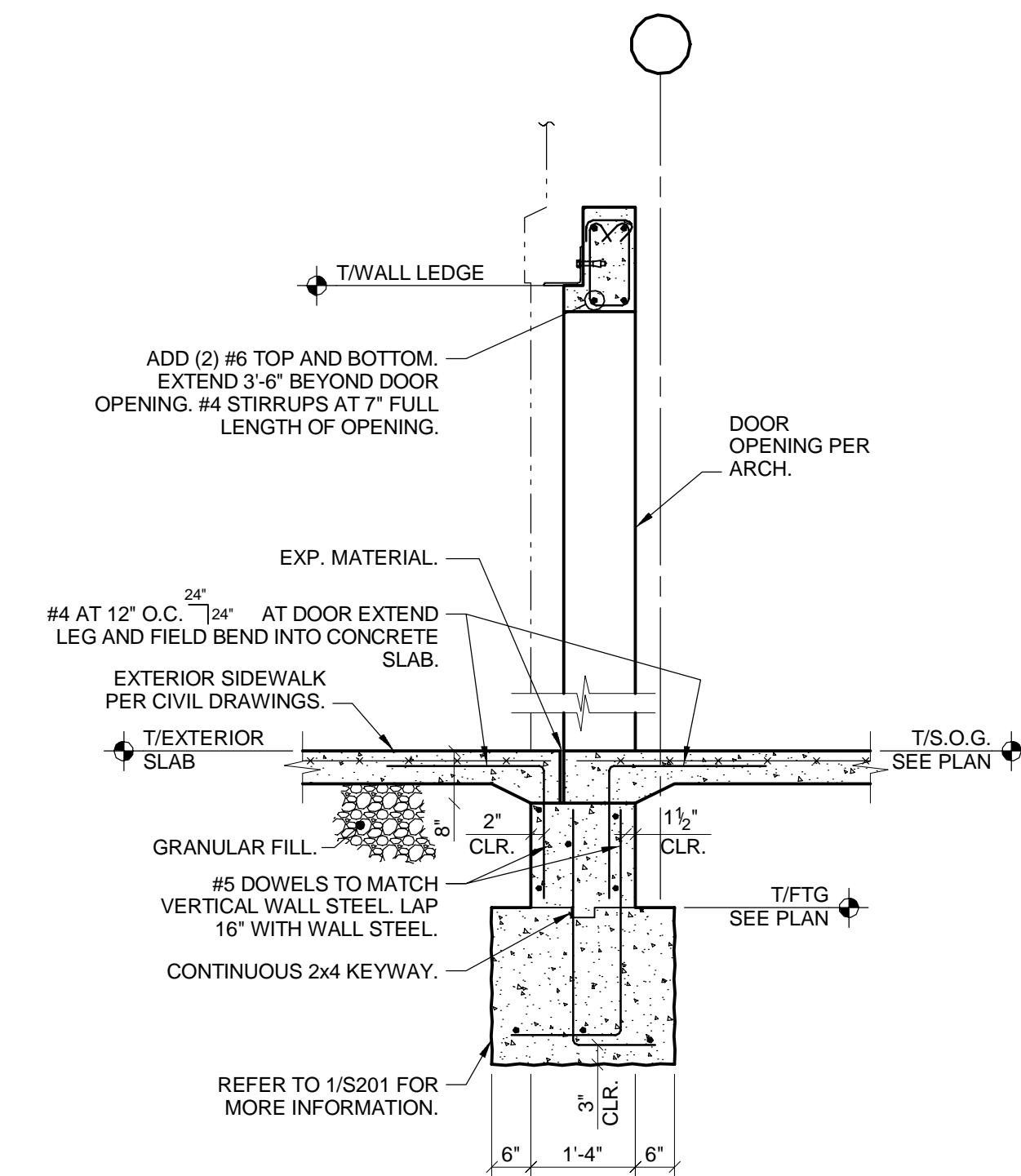
4
1/2" = 1'-0"



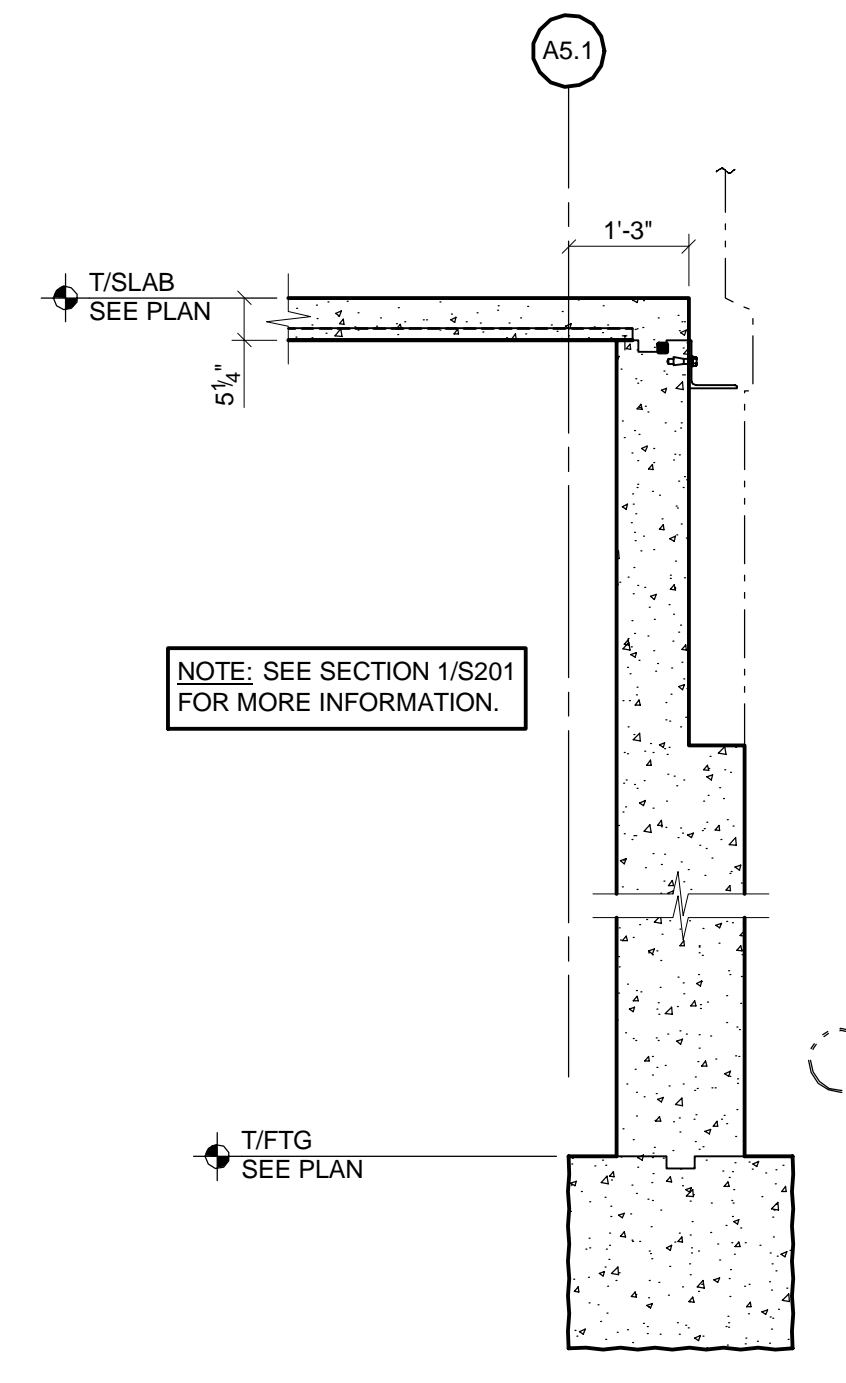
5
1/2" = 1'-0"



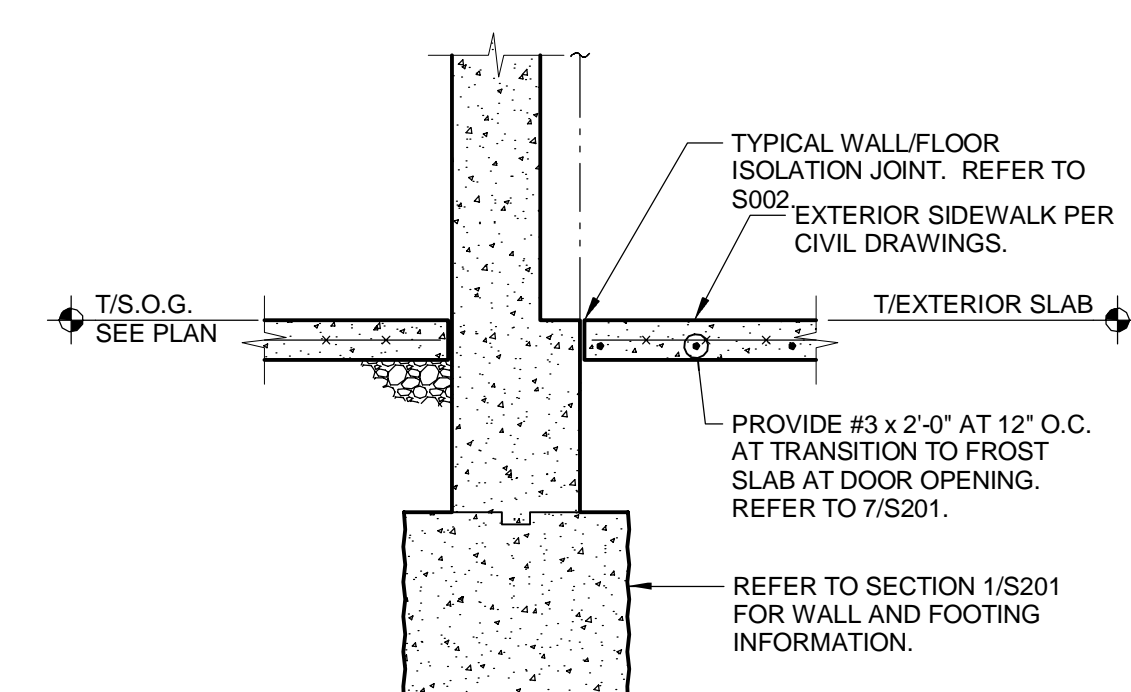
6
1/2" = 1'-0"



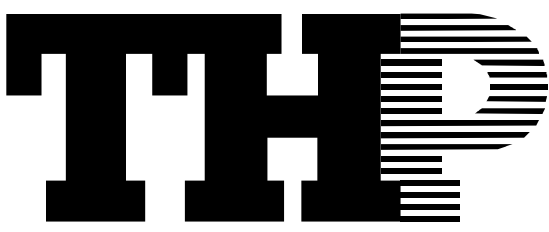

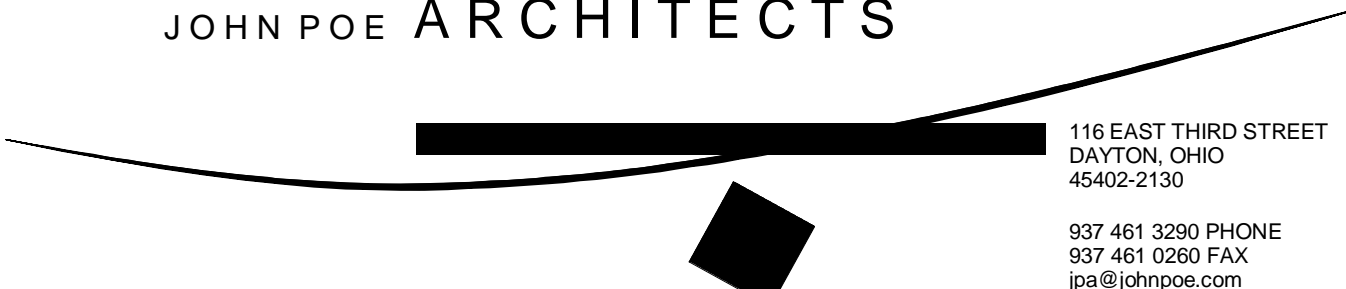
7
1/2" = 1'-0"



8
1/2" = 1'-0"

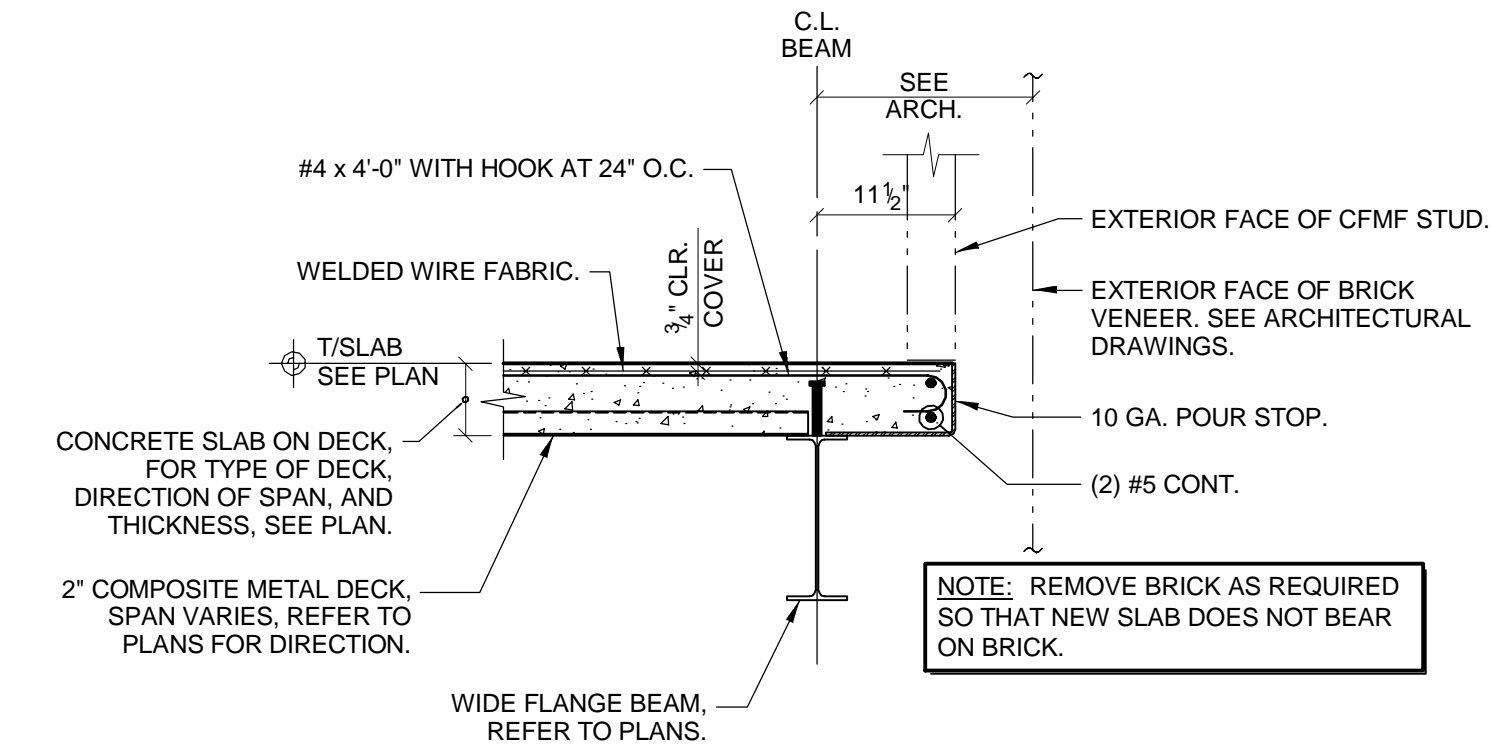


9
1/2" = 1'-0"

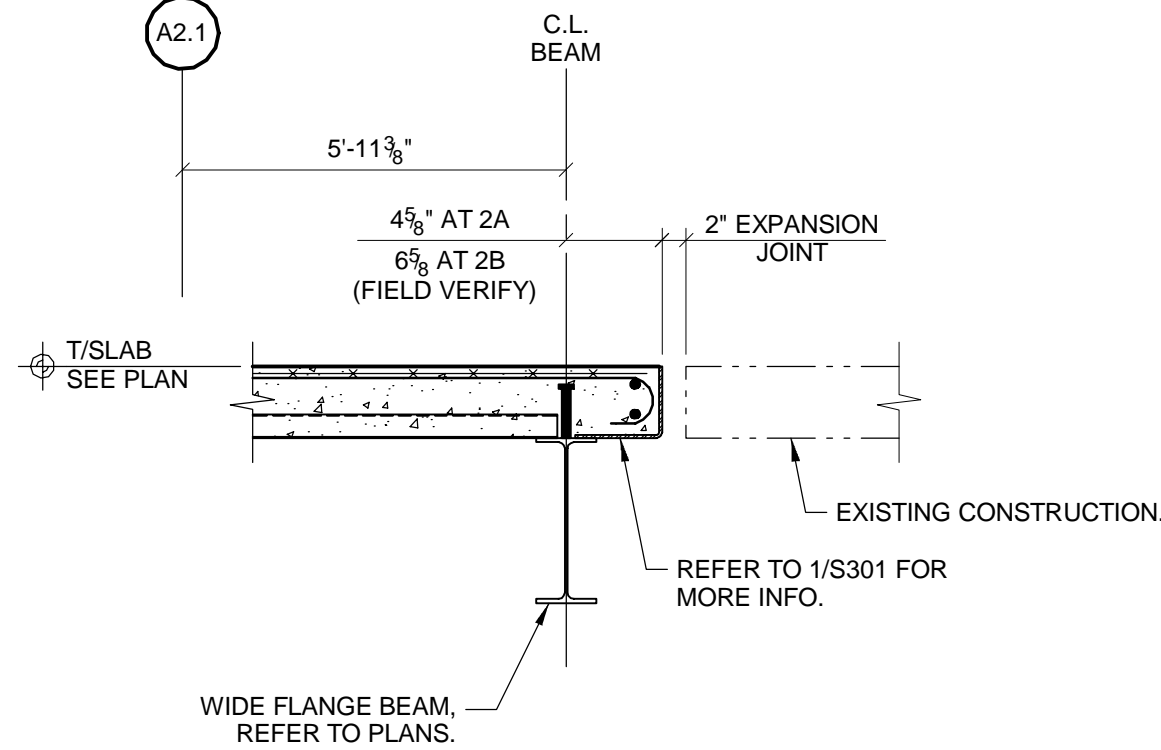
1	Bid Documents	9/6/13	Date
CONSULTANTS:			
 THP THP Limited, Inc. 100 East Eighth Street Cincinnati, Ohio 45202 Phone: 513.241.3222 Fax: 513.241.2981 www.thpltd.com			
			
ARCHITECT/ENGINEERS:			
 JOHN POE ARCHITECTS 116 EAST THIRD STREET DAYTON, OHIO 45402-2130 937.461.3280 PHONE 937.461.0280 FAX jpa@johnpoe.com			
Drawing Title			
FOUNDATION DETAILS			
Approved: Project Director			
Project Title			
Renovate CLC Building 211 West			
Location			
Chillicothe, Ohio			
Date			
Sept. 6, 2013			
Checked			
MCC			
Drawn			
MRB			
Project No.			
VA Project No. 538-107 JPA Project No. 11001.00			
Building Number			
211			
Drawing Number			
S201			
Dwg. 53 of 132			
Office of Construction and Facilities Management			
Department of Veterans Affairs			

three inches = one foot
one and one-half inches = one foot
one inch = one foot
three-quarters inch = one foot
one-half inch = one foot
three-eighths inch = one foot
one-quarter inch = one foot
one-eighth inch = one foot

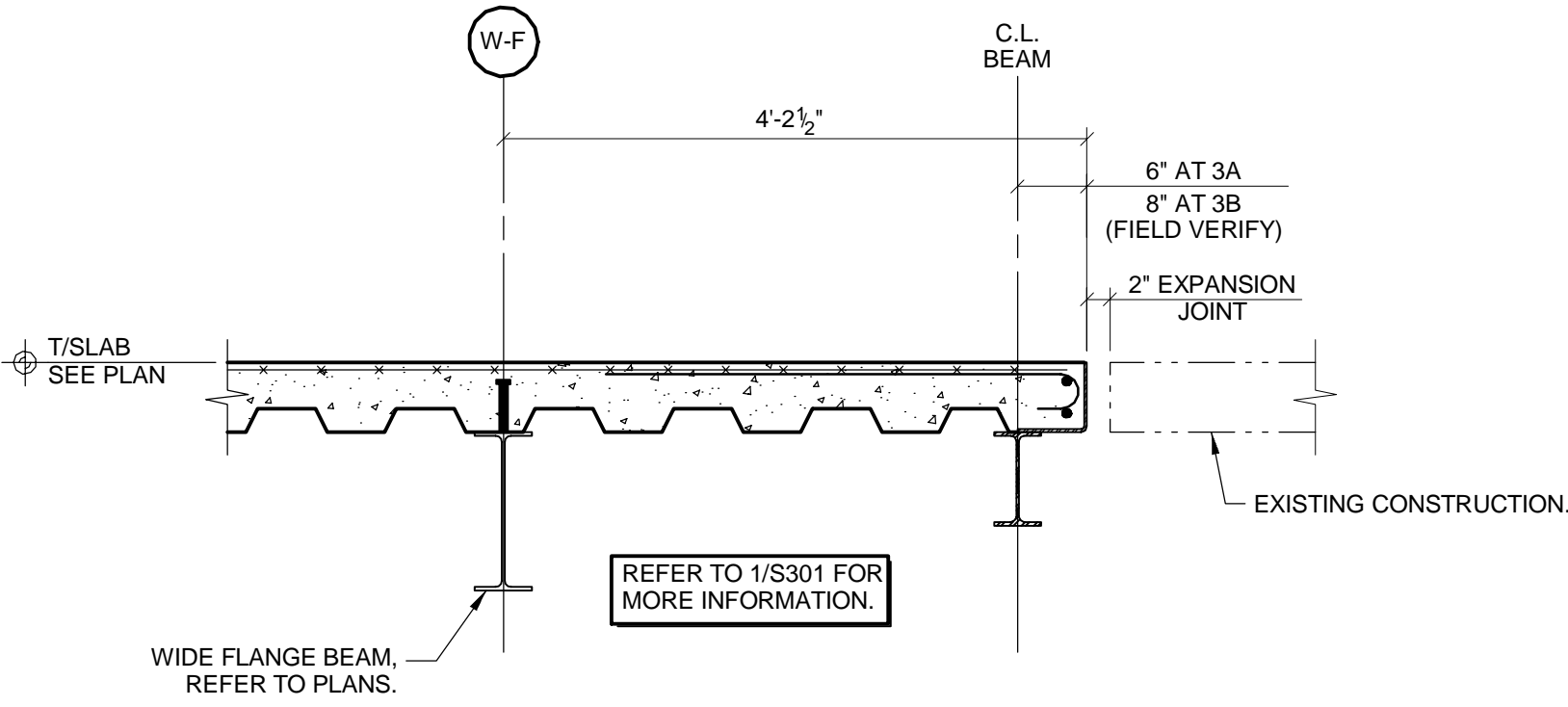
FULLY SPRINKLERED



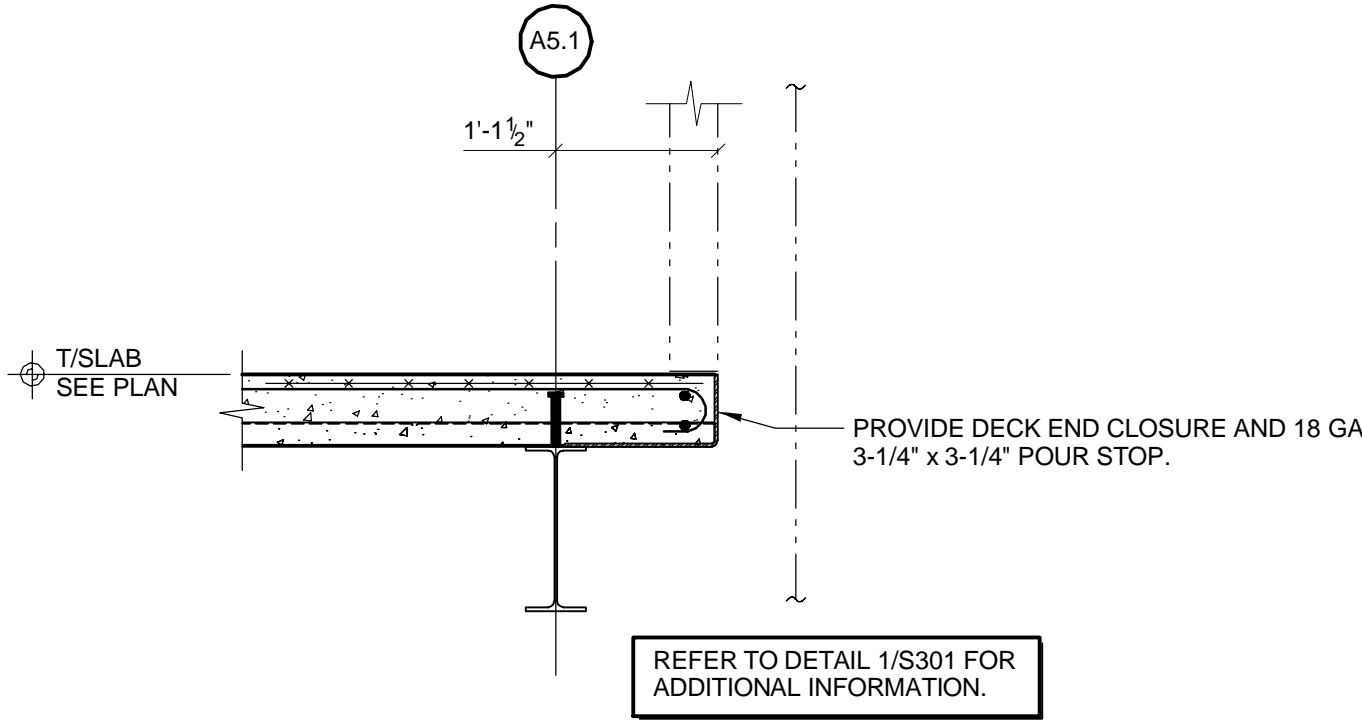
1
3/4" = 1'-0"



2
3/4" = 1'-0"



3
3/4" = 1'-0"



4
3/4" = 1'-0"

1	Bid Documents	9/6/13
Revisions		Date

CONSULTANTS:

THP

THP Limited, Inc.
100 East Eighth Street
Cincinnati, Ohio 45202
Phone: 513.241.3222
Fax: 513.241.2981
www.thpltd.com



ARCHITECT/ENGINEERS:

JOHN POE ARCHITECTS

116 EAST THIRD STREET
DAYTON, OHIO
45402-2130

937 461 3280 PHONE
937 461 0280 FAX
jpa@johnpoe.com

Drawing Title

SECTIONS

Approved: Project Director

Project Title

**Renovate CLC
Building 211 West**

Location

Chillicothe, Ohio

Date

Sept. 6, 2013

Project No.

VA Project No. 538-107
JPA Project No. 11001.00

Building Number

211

Drawing Number

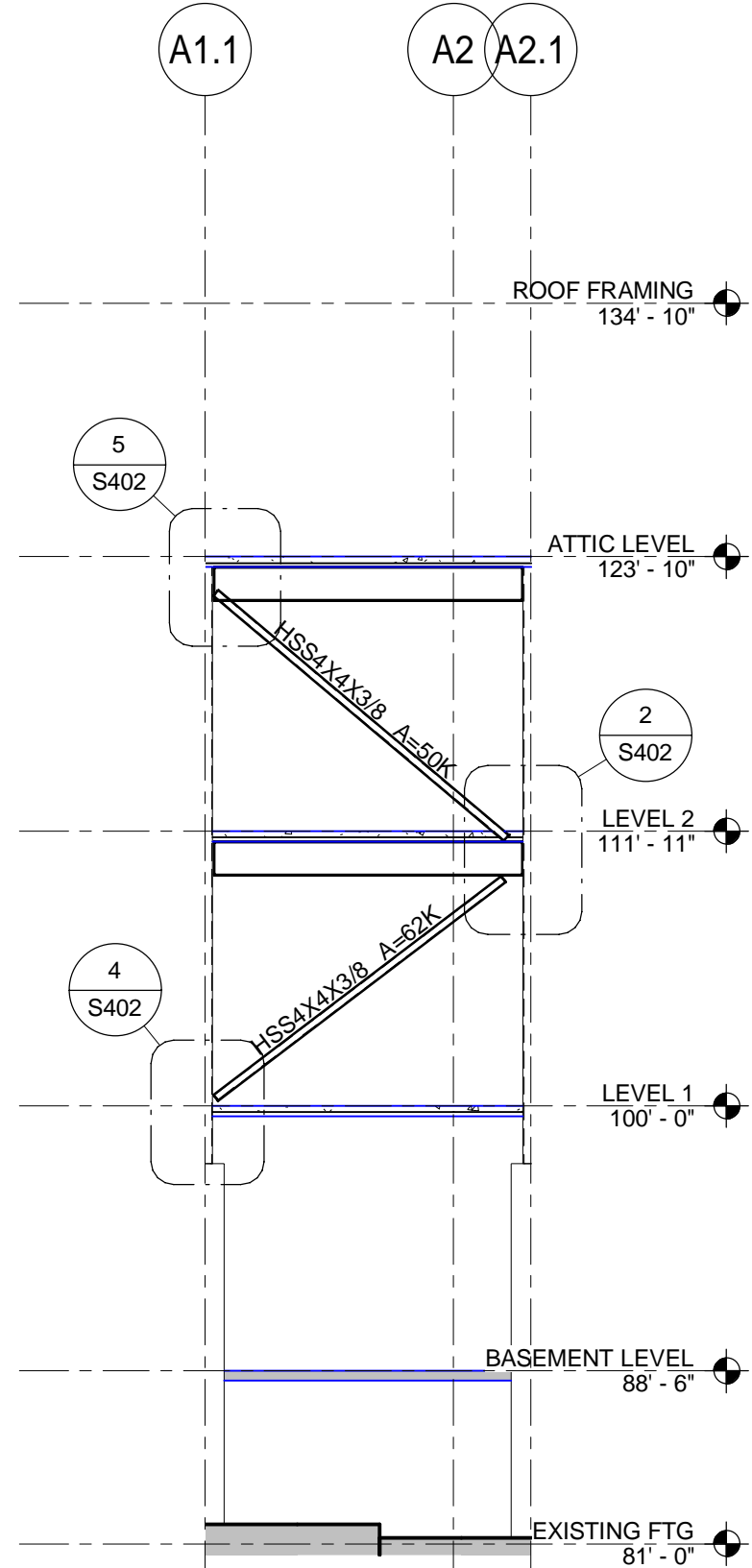
S301

Dwg. 54 of 132

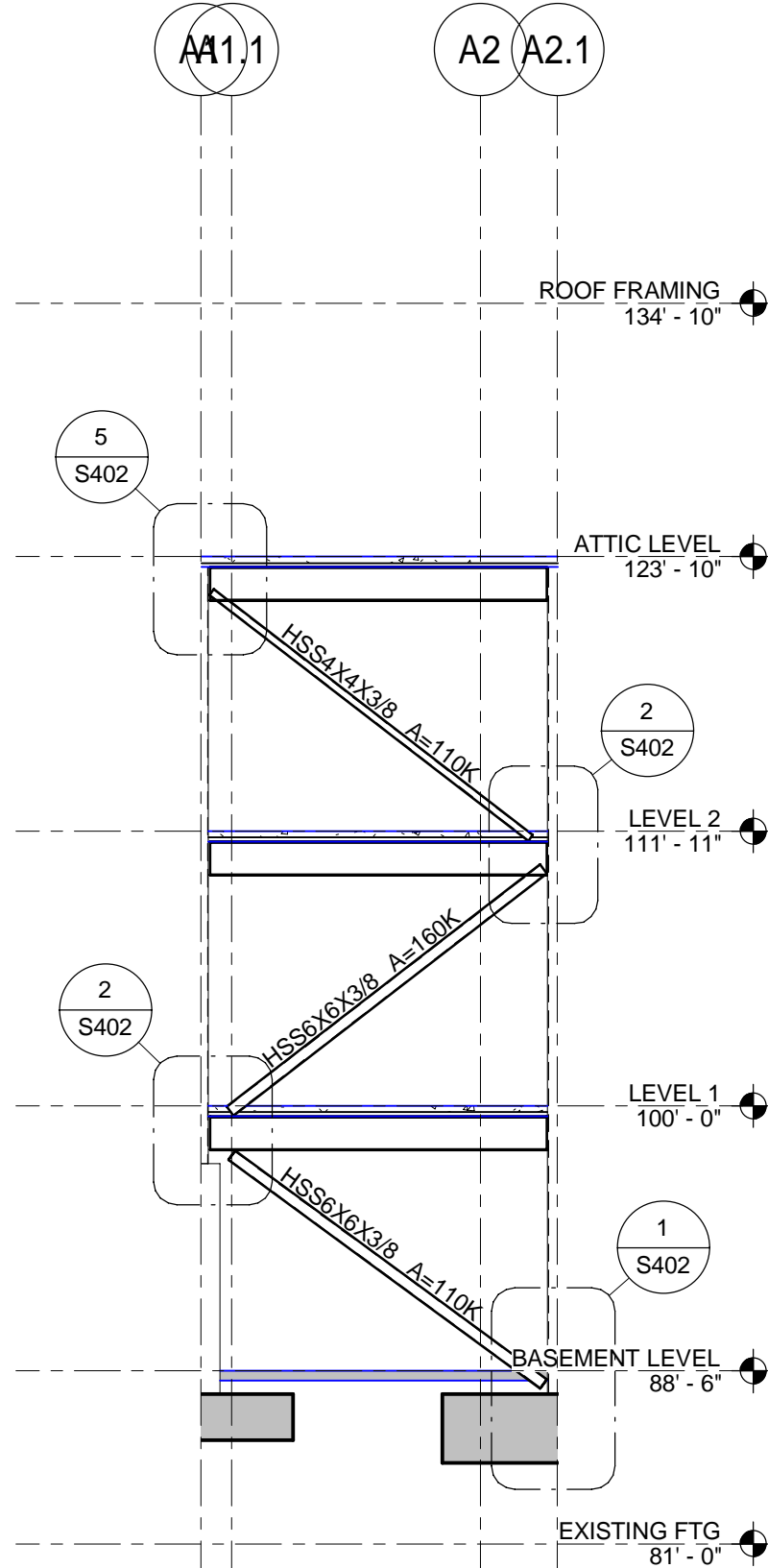
Office of
Construction
and Facilities
Management

Department of
Veterans Affairs

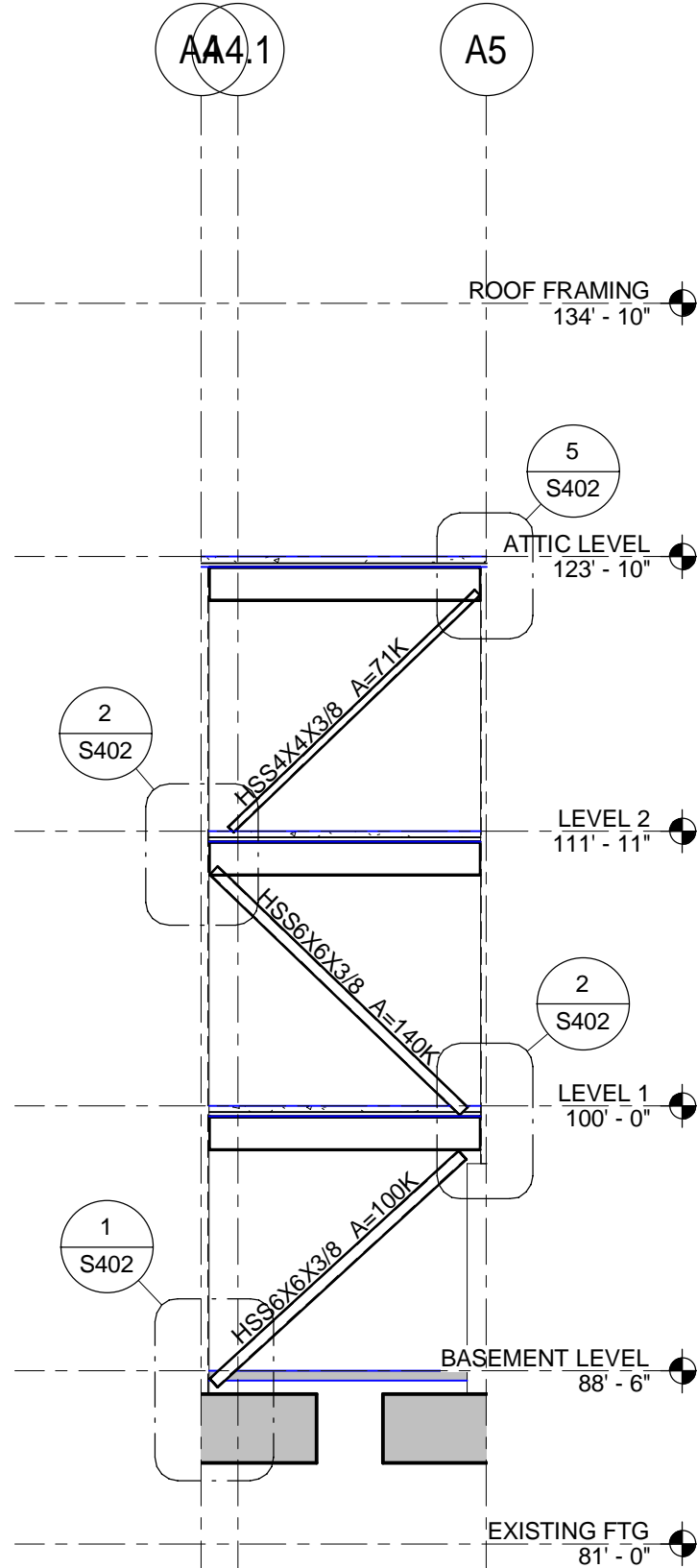
FULLY SPRINKLERED



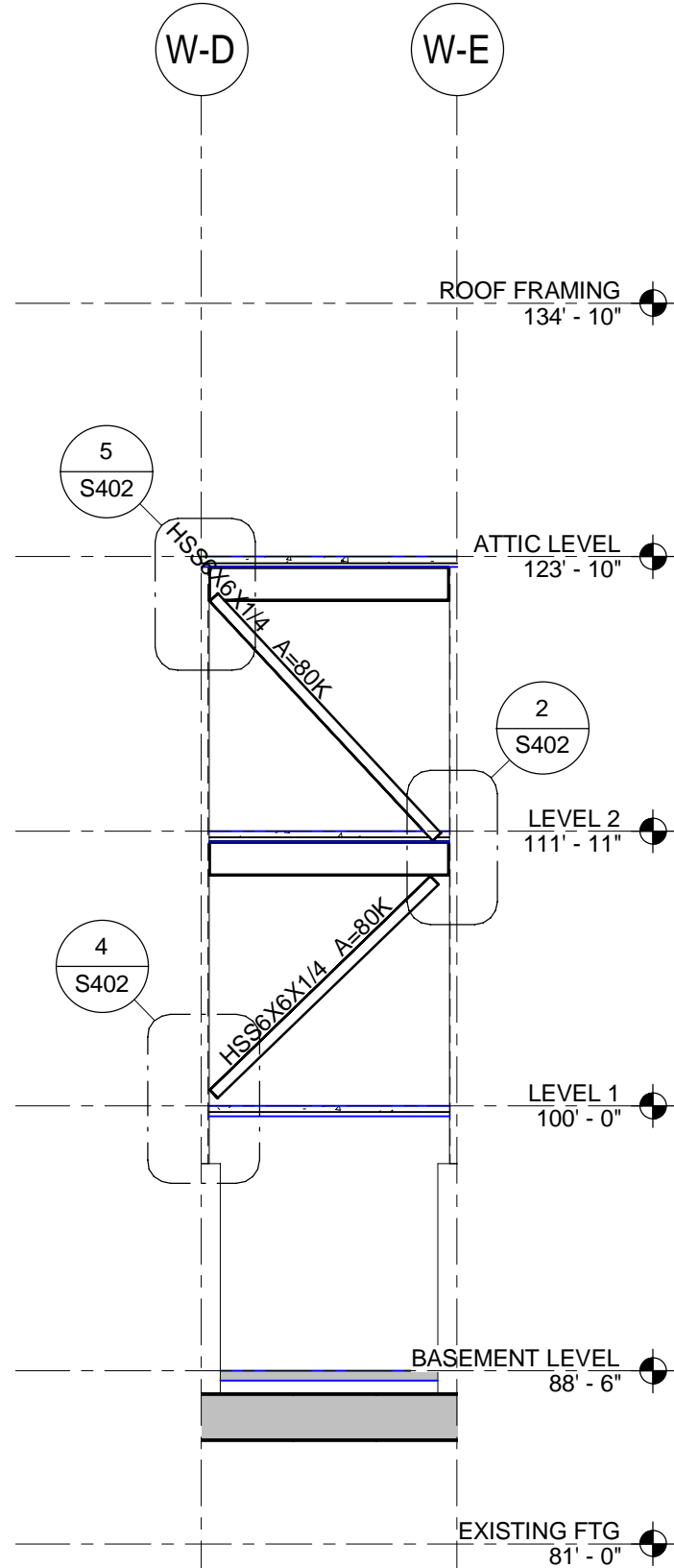
1 ELEVATION - LINE W-K
1/8" = 1'-0"



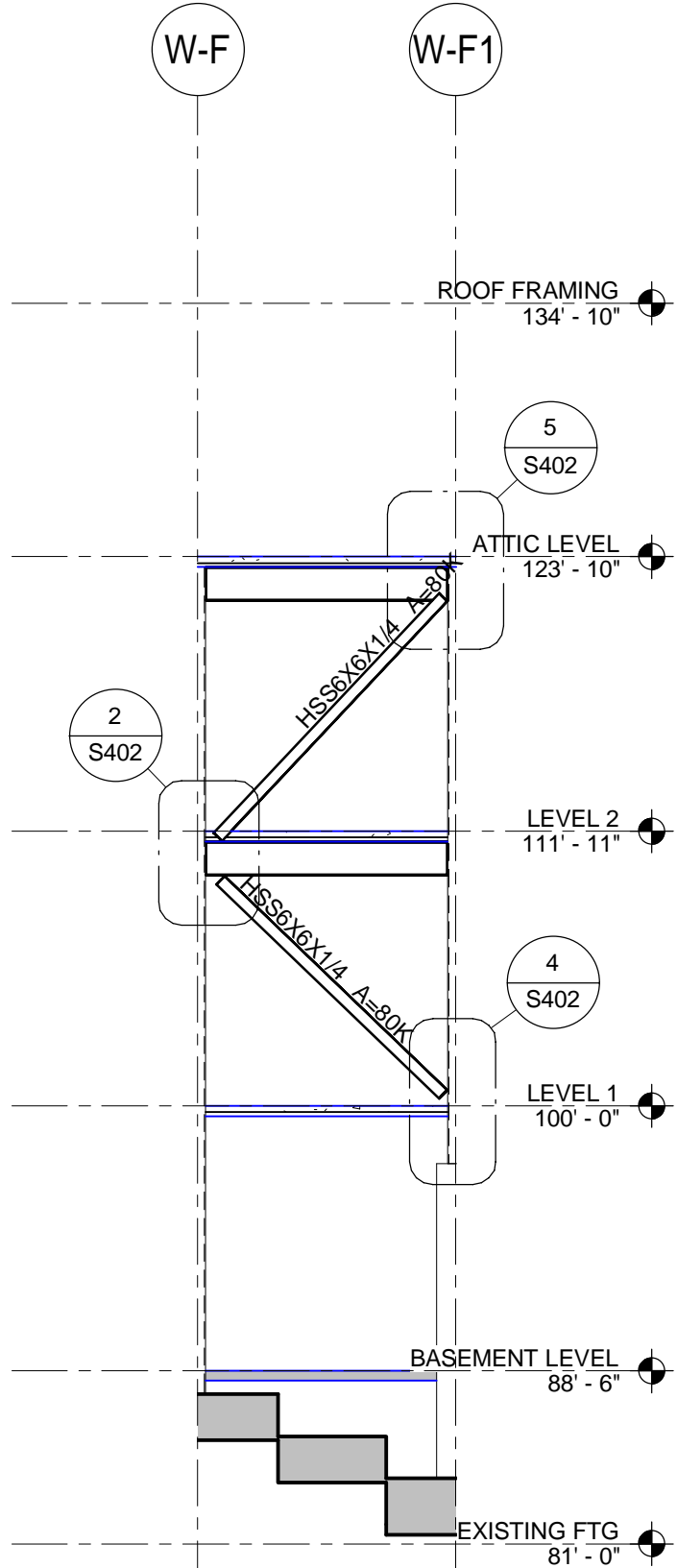
2 ELEVATION - LINE W-E
1/8" = 1'-0"



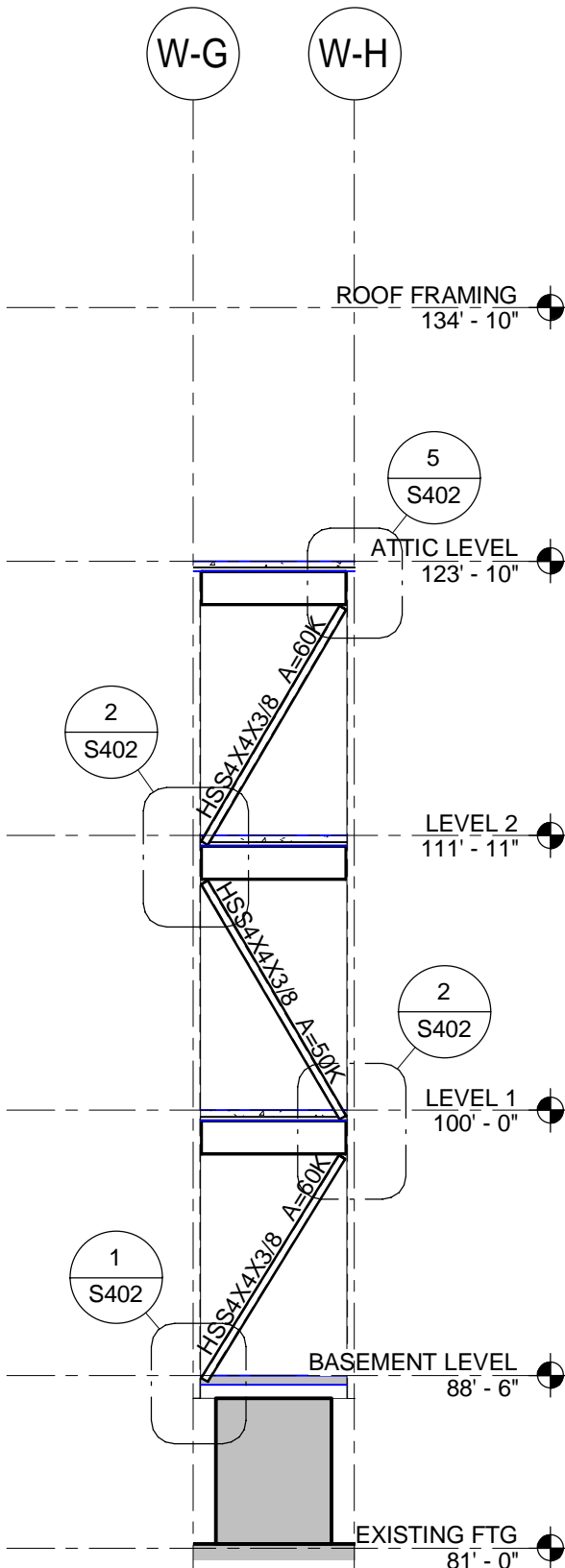
3 ELEVATION - LINE W-C
1/8" = 1'-0"



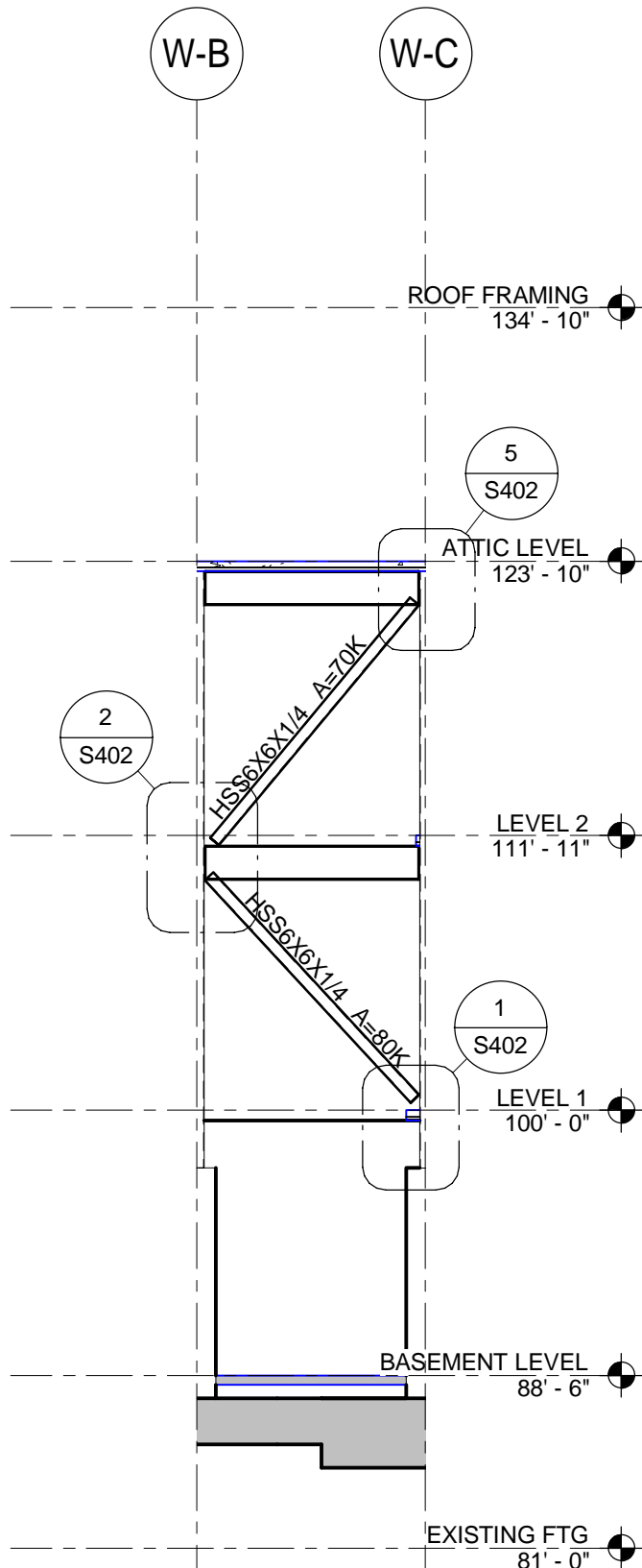
4 ELEVATION - LINE A1.1
1/8" = 1'-0"



5 ELEVATION - LINE A1.1
1/8" = 1'-0"



6 ELEVATION - LINE A2.1
1/8" = 1'-0"



7 ELEVATION - LINE A5
1/8" = 1'-0"

1	Bid Documents	9/6/13
Revisions		Date

CONSULTANTS:

THP

THP Limited, Inc.
100 East Eighth Street
Cincinnati, Ohio 45202
Phone: 513.241.3222
Fax: 513.241.2981
www.thpltd.com



ARCHITECT/ENGINEERS:

JOHN POE ARCHITECTS

116 EAST THIRD STREET
DAYTON, OHIO
45402-2130

937 461 3290 PHONE
937 461 0260 FAX
jpa@johnpoe.com

Drawing Title

BRACING ELEVATIONS

Approved: Project Director

Project Title

Renovate CLC
Building 211 West

Location

Chillicothe, Ohio

Date

Sept. 6, 2013

Checked

MCC

Drawn

MRB

Project No.

VA Project No. 538-107
JPA Project No. 11001.00

Building Number

211

Drawing Number

S401

Dwg. 55 of 132

Office of
Construction
and Facilities
Management

Department of
Veterans Affairs

1 DETAIL
3/4" = 1'-0"

5 DETAIL
3/4" = 1'-0"

2 DETAIL
3/4" = 1'-0"

3 DETAIL
3/4" = 1'-0"

4 DETAIL
3/4" = 1'-0"

FULLY SPRINKLERED

Office of
Construction
and Facilities
Management

Department of
Veterans Affairs

Project No.
VA Project No. 538-107
JPA Project No. 11001.00

Building Number
211

Drawing Number

S402

Dwg. 56 of 132

Project Title
Renovate CLC
Building 211 West

Location
Chillicothe, Ohio

Date
Sept. 6, 2013

Checked
MCC

Drawn
MRB

Drawing Title
BRACING DETAILS

Approved: Project Director

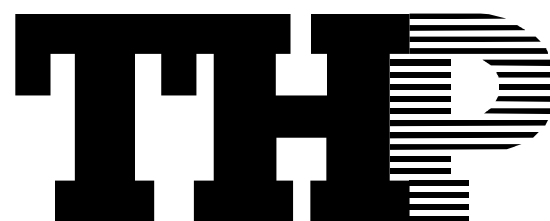
ARCHITECT/ENGINEERS:

JOHN POE ARCHITECTS

116 EAST THIRD STREET
DAYTON, OHIO
45402-2130
937 461 3290 PHONE
937 461 0260 FAX
jpa@johnpoe.com

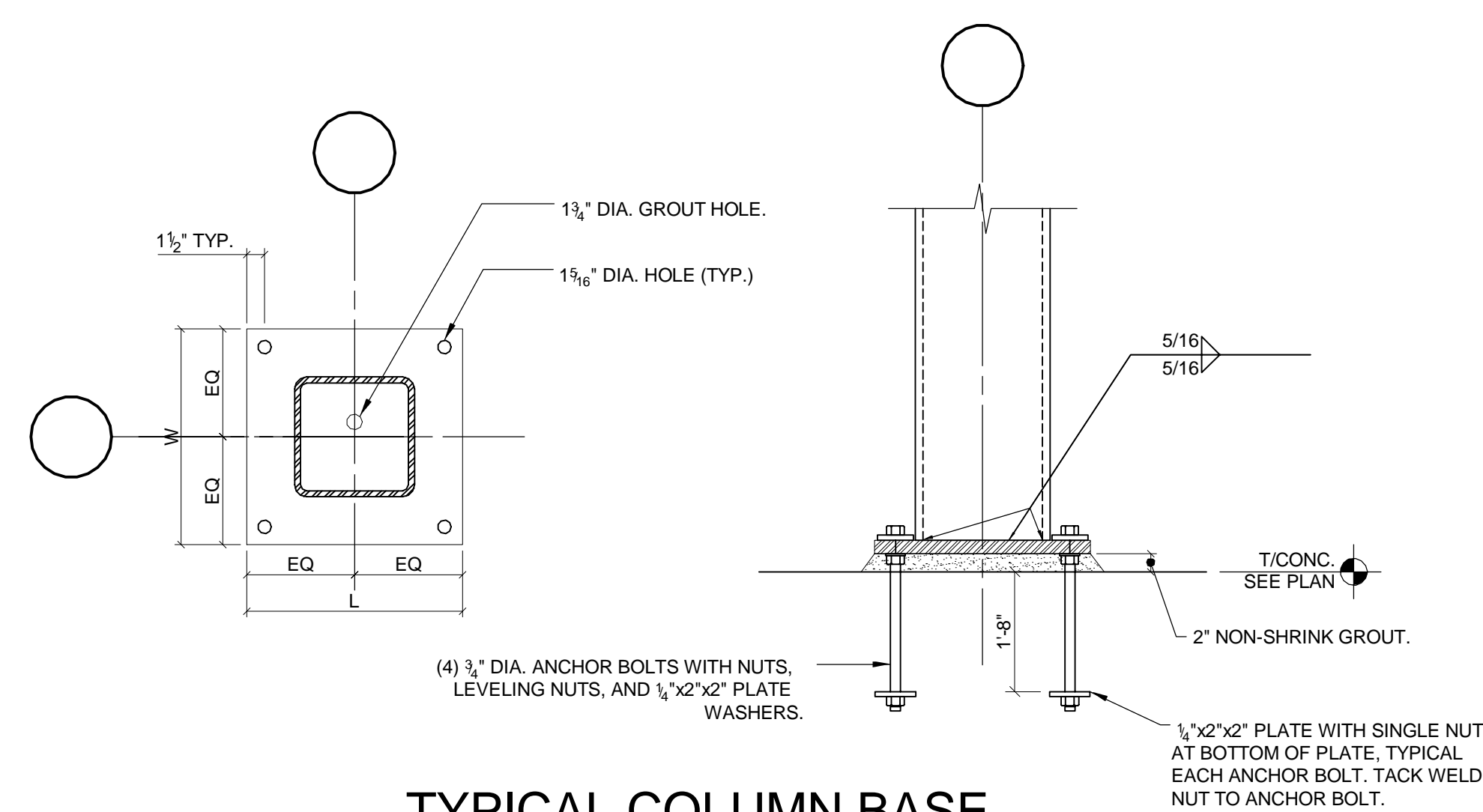


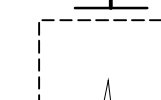
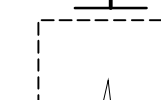

CONSULTANTS:



THP Limited, Inc.
100 East Eighth Street
Cincinnati, Ohio 45202
Phone: 513.241.3222
Fax: 513.241.2981
www.thpltd.com

1	Bid Documents	9/6/13
Revisions		Date



COLUMN SCHEDULE					
	C1	C2	C3	C4	C5
	A1.1W-B A1.1W-H A1.1W-J A5W-D A5.1W-F	A1.1W-C2 A1.1W-D A/W-E A1.1W/F A1.1W-F1 A1.1W-K A2.1W-K A5W-B A5W-C A2W-A	A2.1W-E	A2.1W-C1 A2.1W-G A2.1W-H A2.1W-J A4W-C A4W-D1 A4W-F	A4.1W-A
ATTIC LEVEL					
SECOND FLOOR	HSS 8x6x1/4	HSS 8x6x1/2			
FIRST FLOOR			HSS 10x8x1/2	HSS 8x6x1/2	HSS 8x6x3/8
BASEMENT LEVEL					
BASE PLATE	12"x12"x1"	14"x14"x1"	16"x14"x1 1/2"	14"x14"x1 1/4"	12"x12"x1"
ANCHOR BOLT SIZE (D)	SEE DETAIL	SEE DETAIL	SEE DETAIL	SEE DETAIL	SEE DETAIL

1	Bid Documents	9/6/13
Revisions		Date

CONSULTANTS:

THP

THP Limited, Inc.
100 East Eighth Street
Cincinnati, Ohio 45202
Phone: 513.241.3222
Fax: 513.241.2981
www.thpltd.com



ARCHITECT/ENGINEERS:

JOHN POE ARCHITECTS

116 EAST THIRD STREET
DAYTON, OHIO
45402-2130

937 461 3290 PHONE
937 461 0260 FAX
jpa@johnpoe.com

Drawing Title
COLUMN SCHEDULE
Approved: Project Director

Project Title			
Renovate CLC Building 211 West			
Location			
Chillicothe, Ohio			
Date	Sept. 6, 2013	Checked MCC	Drawn MRB

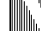
Project No.
VA Project No. 538-107
JPA Project No. 11001.00

Building Number
211

Drawing Number
S501

Dwg. 57 of 132

Office of
Construction
and Facilities
Management

 Department of
Veterans Affairs

 Department of
Veterans Affairs

