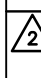
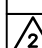


[illegible]

MESSAGE SCHEDULE			
NO.	TYPE	MESSAGE	REMARKS
236	IN-07.02	9117S (BRAILLE)  Primary Care Exam 9	ADD SLIDER
237	IN-07.02	9118S (BRAILLE)  Primary Care Triage 1	ADD SLIDER
238	IN-04.02	9120S (BRAILLE)  Primary Care Teamlet 1	
239	IN-07.02	9121S (BRAILLE)  Primary Care Exam 1	ADD SLIDER
240	IN-04.04	9127C (BRAILLE)  [INSERT]	
240.1	IN-04.02	9122S (BRAILLE)  HAC	
241	IN-04.04	9128C (BRAILLE)  [INSERT]	
242	IN-04.02	9110C (BRAILLE)  Distribution	
243	IN-01.04	(SYMBOLS)  IN CASE OF FIRE, USE STAIRS. DO NOT USE ELEVATORS.	
243	IN-01.01.02	Fire and Emergency Exit Plan  [EGRESS MAP INSERT PROVIDED BY STAFF ON 8 1/2" X 14" PAPER]	
244	IN-04.02	9130C (BRAILLE)  Storage Room	
245			NOT USED
246	IN-04.01	9129C (BRAILLE)  Service Elevator Lobby	
△ 247	IN-GR	(GRAPHIC PANEL)	(REFER TO B6/1-A408)
248	IN-04.04	9133C (BRAILLE)  [INSERT]	
249	IN-04.04	9134C (BRAILLE)  [INSERT]	
250	IN-16.52	Medical Residents, Counselor, Telehealth, Administration	
251	IN-04.02	9136N (BRAILLE)  Residents Teamlet 2	
252	IN-04.02	9190N (BRAILLE)  Residents Teamlet 1	
253	IN-07.02	9137N (BRAILLE)  Residents Exam 9	ADD SLIDER
254	IN-07.02	9189N (BRAILLE)  Residents Exam 1	ADD SLIDER
255	IN-07.02	9138N (BRAILLE)  Residents Exam 10	ADD SLIDER
256	IN-07.02	9188N (BRAILLE)  Residents Exam 2	ADD SLIDER
△ 257	IN-GR	(GRAPHIC PANEL)	(REFER TO B1/1-A409)
258	IN-07.02	9187N (BRAILLE)  Residents Triage 1	ADD SLIDER
259	IN-07.02	9139N (BRAILLE)  Residents Triage 2	ADD SLIDER
260	IN-07.02	9186N (BRAILLE)  Residents Exam 3	ADD SLIDER
261	IN-07.02	9140N (BRAILLE)  Residents Exam 11	ADD SLIDER
261.1	IN-04.02	9141N (BRAILLE)  Electrical Closet	ADD SLIDER
262	IN-07.02	9185N (BRAILLE)  Residents Exam 4	ADD SLIDER
△ 263	IN-GR	(GRAPHIC PANEL)	(REFER TO B1/1-A409)

MESSAGE SCHEDULE			
NO.	TYPE	MESSAGE	REMARKS
264	IN-07.02	9184N (BRAILLE) Residents Exam 5	ADD SLIDER
265	IN-07.02	9142N (BRAILLE) Residents Exam 12	ADD SLIDER
266	IN-04.02	9143N (BRAILLE) Preceptor Room	
267	IN-04.02	9144N (BRAILLE) Clean Linen	
268	IN-07.02	9183N (BRAILLE) Residents Exam 6	ADD SLIDER
269	IN-04.02	9182N (BRAILLE) Residents Teamlet 3	
270	IN-07.02	9181N (BRAILLE) Residents Exam 7	ADD SLIDER
271	IN-13	Telehealth & Counodin	MESSAGE LAYOUT C
 272	IN-WF.01	(GRAPHIC PANEL)	(REFER TO C171-2409) CLIENT TO IDENTIFY NOMENCLATURE FOR CORNER WRAP
273	IN-04.02	9146N (BRAILLE) Medicine	
274	IN-09.03	9147N (BRAILLE) RESTROOM	
275	IN-04.04	9148N (BRAILLE) [INSERT]	
276	IN-04.04	9149N (BRAILLE) [INSERT]	
277	IN-04.04	9150N (BRAILLE) [INSERT]	
278	IN-04.04	9152N (BRAILLE) [INSERT]	
279	IN-04.02	9153N (BRAILLE) Telehealth	
280	IN-04.04	9154N (BRAILLE) [INSERT]	
281	IN-04.04	9155N (BRAILLE) [INSERT]	
282	IN-04.04	9156N (BRAILLE) [INSERT]	
283	IN-04.04	9157N (BRAILLE) [INSERT]	
284	IN-04.01	9151N (BRAILLE) Telehealth/ Counodin	
285	IN-04.02	9158N (BRAILLE) Clean Utility	
286	IN-09.03	9159N (BRAILLE) STAFF ONLY	
287	IN-04.02	9160N (BRAILLE) Soiled Utility	
288	IN-04.02	9123N (BRAILLE) IT Room	
289	IN-04.02	9124N (BRAILLE) Electrical Room	
290	IN-07.02	9180N (BRAILLE) Resident Triage 3	ADD SLIDER
291	IN-01.10	STAIR 4 LEVEL 9 EXIT STAIR DOWN (BRAILLE) Keep Door Closed	
291	IN-01.01.02	Fire and Emergency Exit Plan [EGRESS MAP INSERT PROVIDED BY STAFF ON 6 1/2" X 14" PAPER]	

MESSAGE SCHEDULE			
NO.	TYPE	MESSAGE	REMARKS
291.1	IN--01.11	STAIR 4 NO ROOF ACCESS 9  (V) EXIT DOWN TO FLOOR 1  XTHROUGHXX	LEVEL OF DISCHARGE AND ROOF ACCESS INFORMATION TO BE COORDINATED WITH THE VA AND EXISTING EGRESS CONDITIONS
292	IN--07.02	9179N (BRAILLE)  Residents Exam 8	ADD SLIDER
293	IN--01.02	Hose Closet	
294	IN--07.01	9178N (BRAILLE)  Administration Conference Room	
295	IN--04.01	9161N (BRAILLE)  Staff Lounge	
296	IN--04.01	9162N (BRAILLE)  Administration Offices	
297	IN--04.04	9163N (BRAILLE)  [INSERT]	
298	IN--04.04	9177N (BRAILLE)  [INSERT]	
299	IN--04.04	9164N (BRAILLE)  [INSERT]	
300	IN--04.04	9176N (BRAILLE)  [INSERT]	
301	IN--04.04	9166N (BRAILLE)  [INSERT]	
301.1	IN--04.02	9165N (BRAILLE)  Electrical Closet	
302	IN--04.04	9175N (BRAILLE)  [INSERT]	
303	IN--04.04	9167N (BRAILLE)  [INSERT]	
304	IN--04.04	9174N (BRAILLE)  [INSERT]	
305	IN--04.04	9168N (BRAILLE)  [INSERT]	
306	IN--04.04	9173N (BRAILLE)  [INSERT]	
307	IN--04.04	9169N (BRAILLE)  [INSERT]	
308	IN--04.04	9172N (BRAILLE)  [INSERT]	
309	IN--04.04	9170N (BRAILLE)  [INSERT]	
310	IN--04.04	9171N (BRAILLE)  [INSERT]	
 311	IN--GR	(GRAPHIC PANEL)	<u>REFER TO B3 / (-A409)</u>
400	IN--01.04	(SYMBOLS)  IN CASE OF FIRE, USE STAIRS; DO NOT USE ELEVATORS.	SALVAGE EXISTING SIGN. VA TO DETERMINE IF NEW SIGN IS NECESSARY.
400	IN--01.01.02	Fire and Emergency Exit Plan  [EGRESS MAP INSERT PROVIDED BY STAFF ON 8 1/2" X 14" PAPER]	SALVAGE EXISTING SIGN. VA TO DETERMINE IF NEW SIGN IS NECESSARY.
401	IN--04.02	10111C (BRAILLE)  Mechanical Room	
402	IN--04.02	10109C (BRAILLE)  Distribution	SALVAGE EXISTING SIGN. VA TO DETERMINE IF NEW SIGN IS NECESSARY.
403	IN--04.02	10111C (BRAILLE)  Mechanical Room	

ADDENDUM #2 <u>A</u>	09/09/2013
<b>Revisions:</b>	<b>Date</b>
ISSUED FOR CONSTRUCTION	08/15/2013

**CONSULTANTS:**

ASBESTOS ABATEMENT CONSULTANT:

*Egan Environmental Consulting, Inc.*

14 HIGH STREET  
MAHWAH, NEW JERSEY 07430

Tel: (201) 848-7790 Fax: (201) 848-7791

KEY PLAN:


ARCHITECT/ENGINEERS:

**CANNONDESIGN**

360 Madison Avenue, New York, New York 10017 212.972.9800

Baltimore ■ Boston ■ Buffalo ■ Calgary ■ Chicago  
Houston ■ Los Angeles ■ Mumbai ■ New York ■ Phoenix  
St. Louis ■ San Francisco ■ Shanghai ■ Toronto  
Vancouver ■ Wichita ■ Washington DC

Drawing Title	WAYFINDING MESSAGE SCHEDULE
Approved Project Director	

<b>Project Title</b> VA NY HARBOR HEALTHCARE SYSTEM MANHATTAN VAMC - BUILDING 1 9TH FLOOR RENOVATIONS		
<b>Location</b> 423 EAST 23RD STREET NEW YORK, NY 10010		
<b>Date</b> AUGUST 15, 2013	<b>Checked</b> CH	<b>Drawn</b> KK

Project Number 630PR2600	<div>Office of Construction &amp; Facilities Management</div> <div>  <div>U.S. Department of Veterans Affairs</div> </div>
Building Number 1	
Drawing Number 1-AG101	



A

B

C

D

E

F

A

B

C

D

E

F

three inches = one foot  
6"

one and one half inches = one foot  
6"

one inch = one foot  
6"

one inch = one foot  
6"

three quarters inch = one foot  
6"

one half inch = one foot  
6"

one half inch = one foot  
6"

three eighths inch = one foot  
6"

one quarter inch = one foot  
6"

one eighth inch = one foot  
6"

one eighth inch = one foot  
6"

one eighth inch = one foot  
6"

VA FORM 08-6231

ADDENDUM #2	09/09/2013
Revisions	Date
ISSUED FOR CONSTRUCTION	08/15/2013

CONSULTANTS:
ASBESTOS ABATEMENT CONSULTANT: <b>Egan Environmental Consulting, Inc.</b> 14 HIGH STREET MAHWAH, NEW JERSEY 07430 Tel: (201) 848-7790 Fax: (201) 848-7791

KEY PLAN:
-----------

--

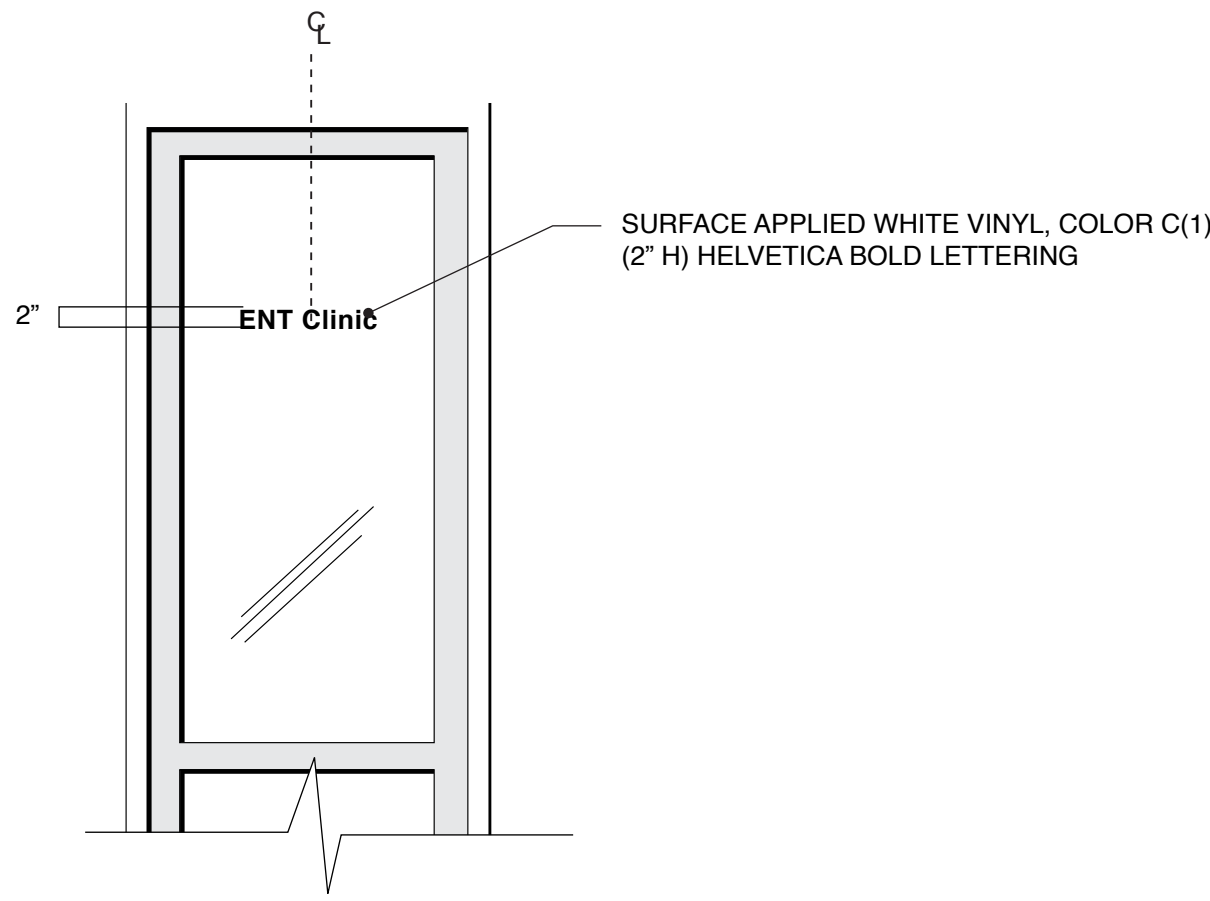
ARCHITECT/ENGINEERS: <b>CANNON</b> DESIGN 360 Madison Avenue, New York, New York 10017 212.972.9800 Baltimore • Boston • Buffalo • Calgary • Chicago Houston • Los Angeles • Mumbai • New York • Phoenix St. Louis • San Francisco • Shanghai • Toronto Vancouver • Victoria • Washington DC
---

Drawing Title WAYFINDING INTERIOR SIGNAGE ELEVATIONS AND DETAILS
Approved Project Director

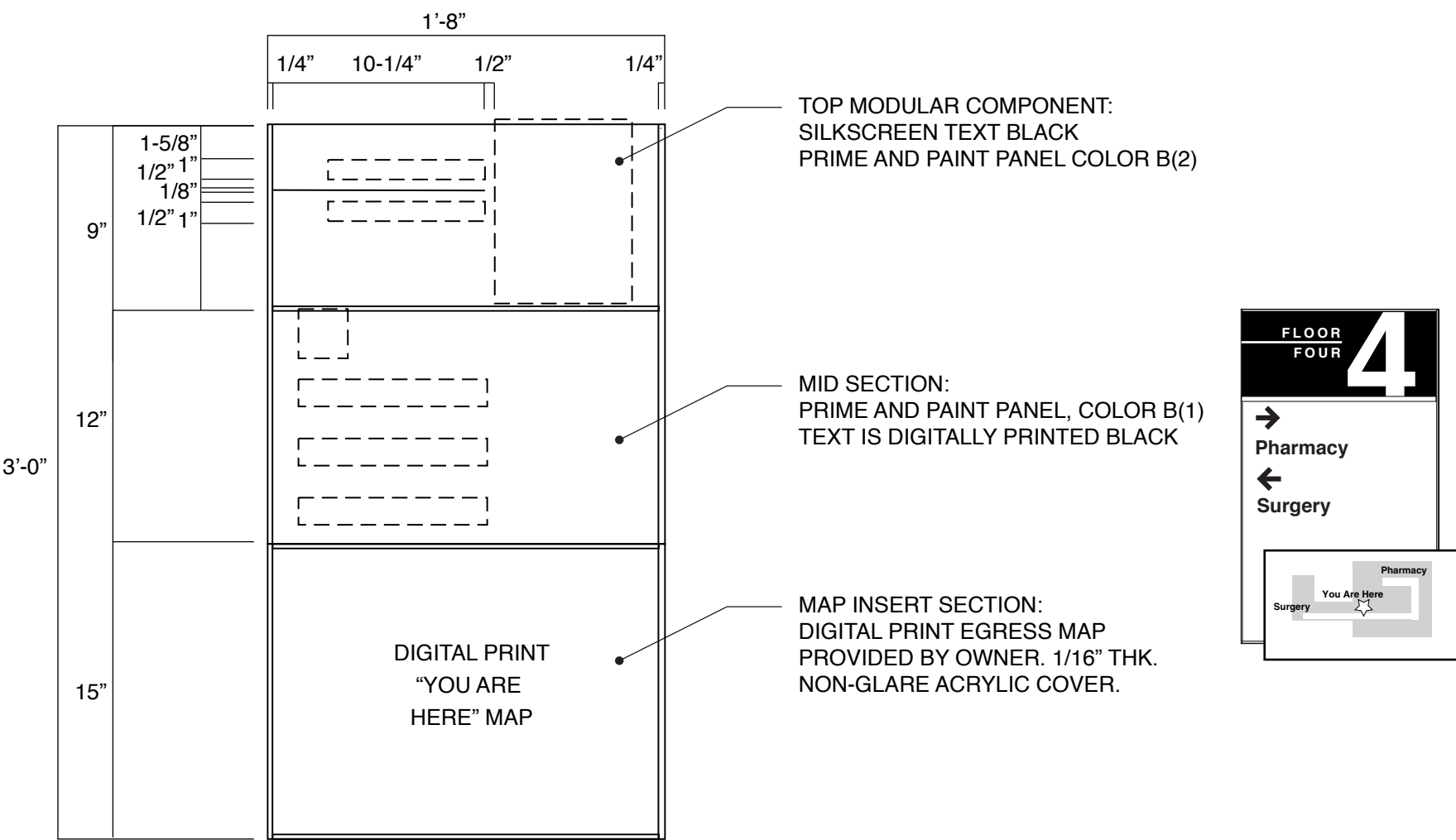
Project Title VA NY HARBOR HEALTHCARE SYSTEM MANHATTAN VAMC - BUILDING 1 9TH FLOOR RENOVATIONS
Location 423 EAST 23RD STREET NEW YORK, NY 10010
Date AUGUST 15, 2013
Checked CH
Drawn KK

Project Number 630PR2600
Building Number 1
Drawing Number 1-AG202

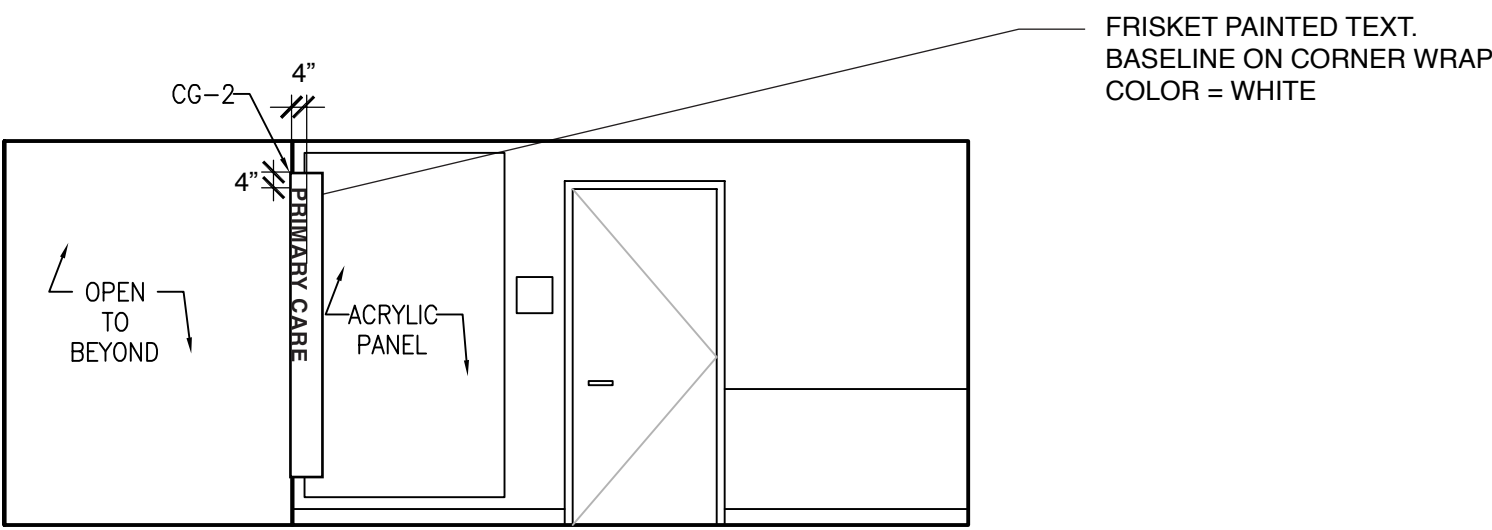
Office of Construction & Facilities Management
VA U.S. Department of Veterans Affairs



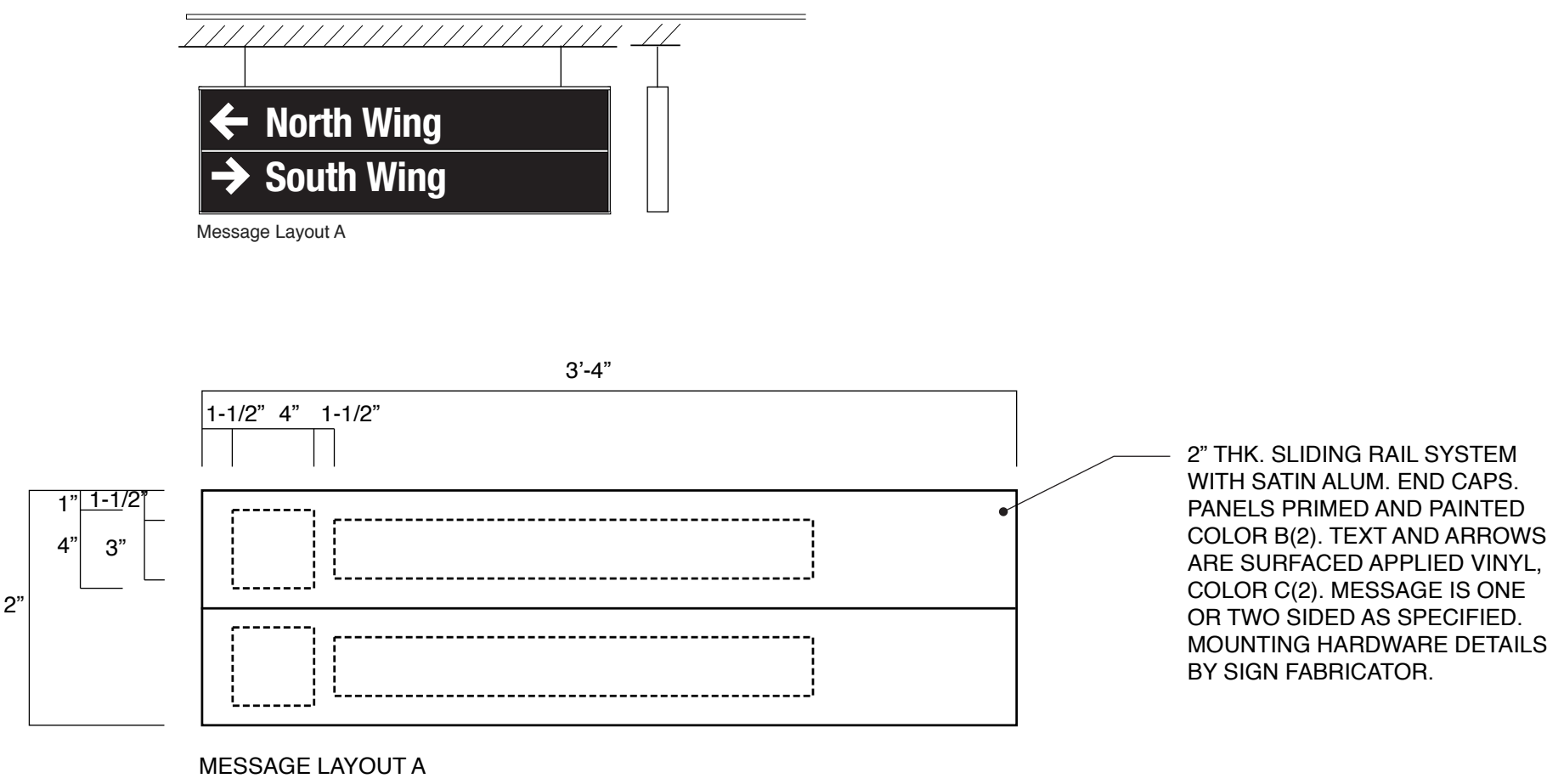
A5 IN-18.01 - FRONT ELEVATION, TYPICAL  
SCALE: 3/4" = 1'-0"



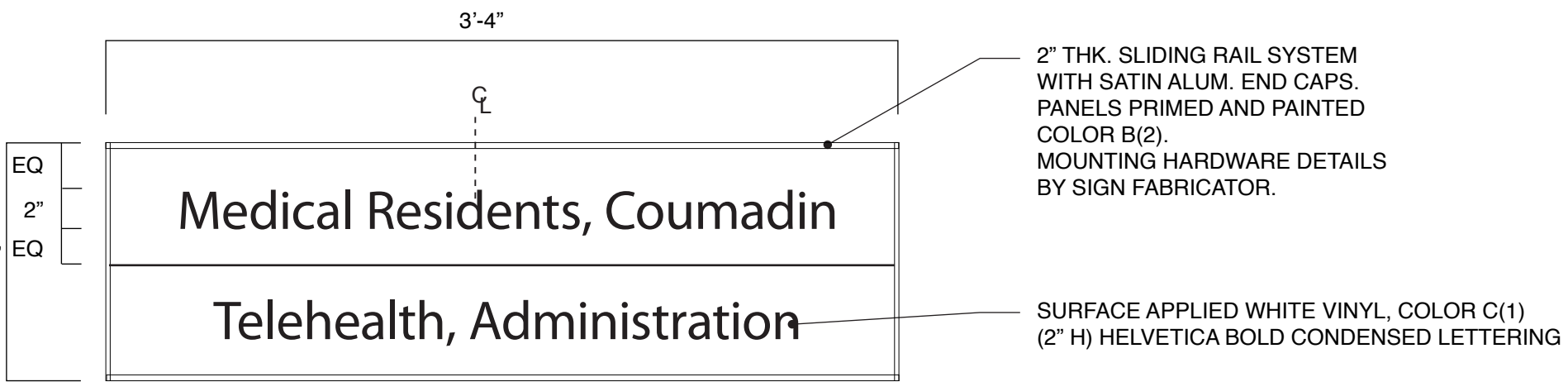
A8 IN-14.25 - FRONT ELEVATION, TYPICAL  
SCALE: 1 1/2" = 1'-0"



C5 IN-WF.01 - FRONT ELEVATION, TYPICAL  
SCALE: 1/4" = 1'-0"



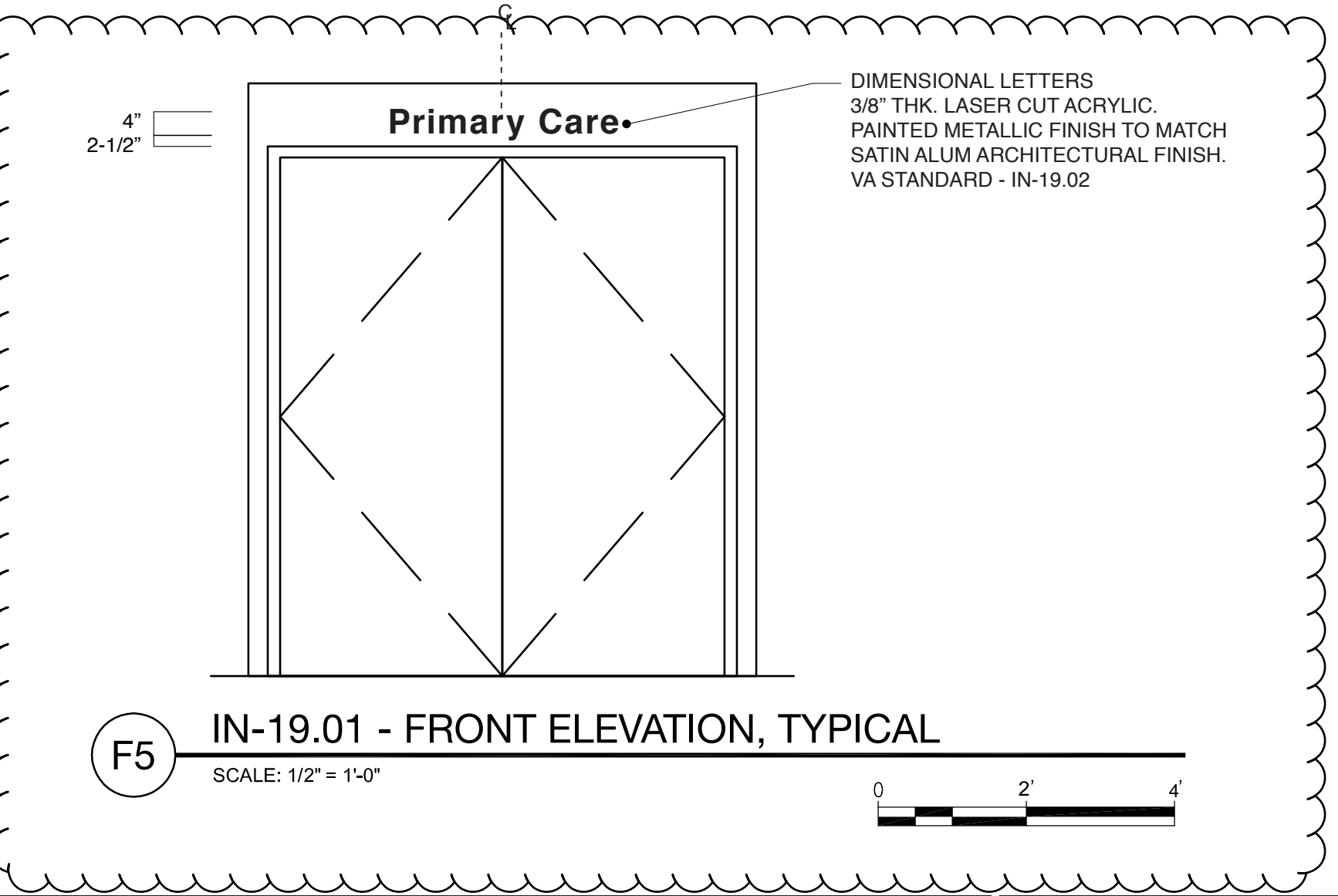
C8 IN-15.52 - FRONT ELEVATION, TYPICAL  
SCALE: 1 1/2" = 1'-0"



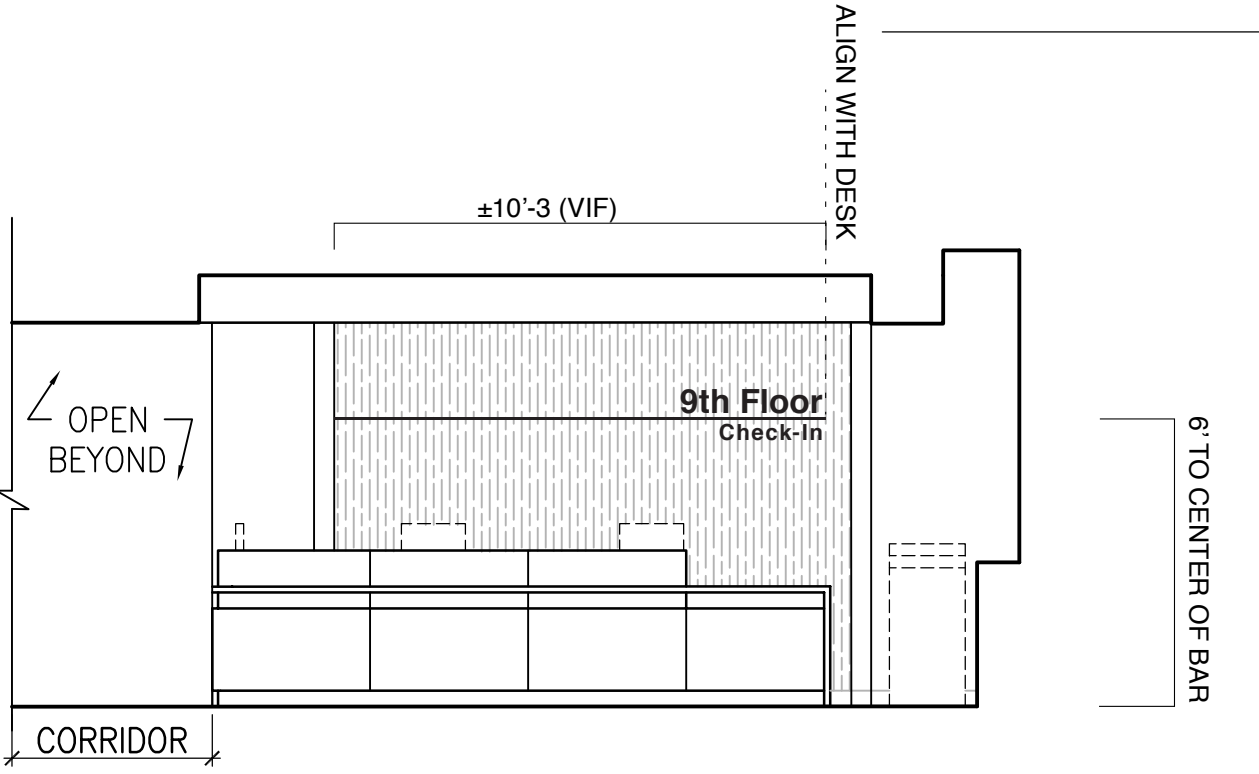
E5 IN-16.52 - FRONT ELEVATION, TYPICAL  
SCALE: 1 1/2" = 1'-0"



E8 IN-19.02-03 - FRONT ELEVATION, TYPICAL  
SCALE: 1" = 1'-0"



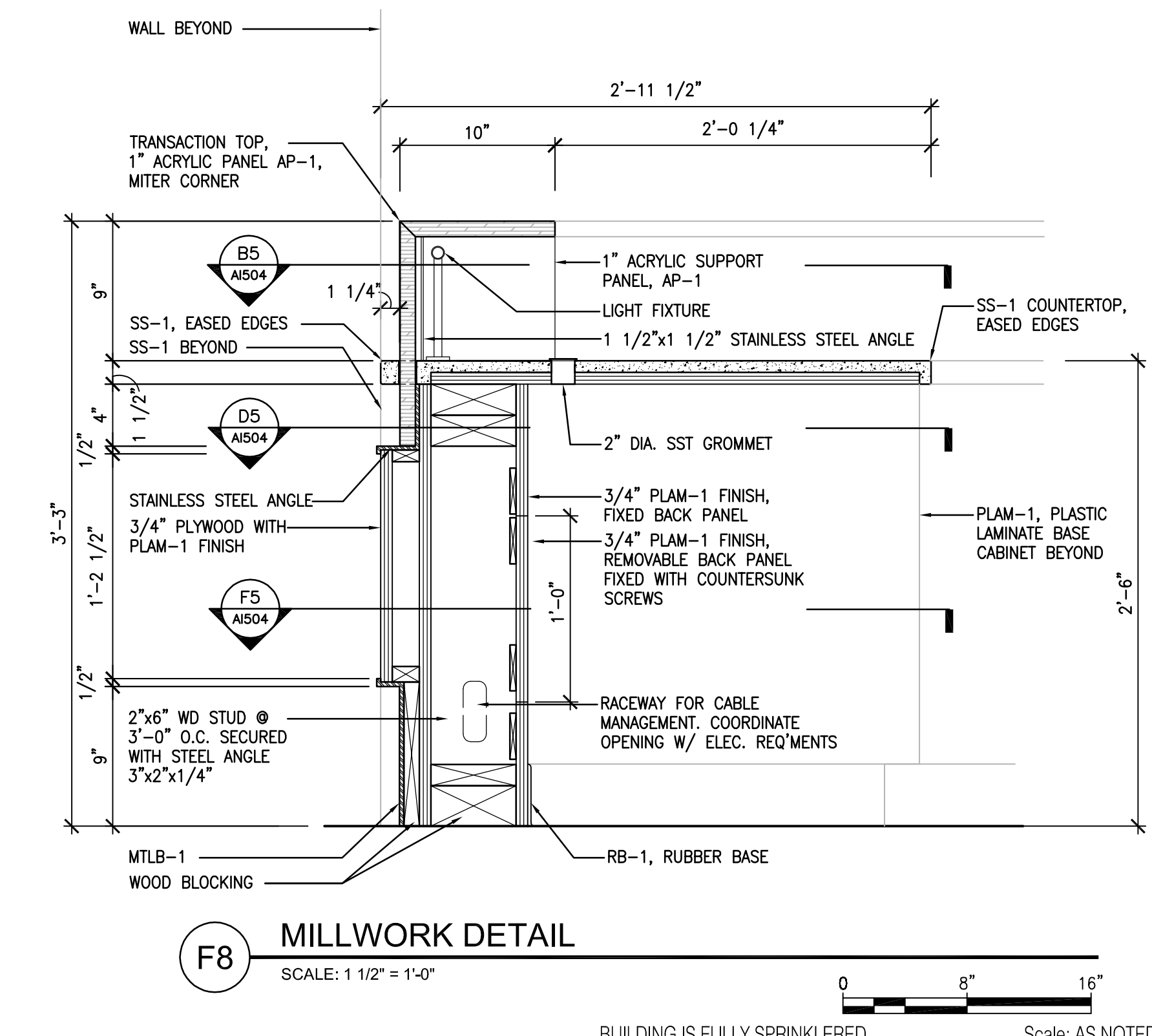
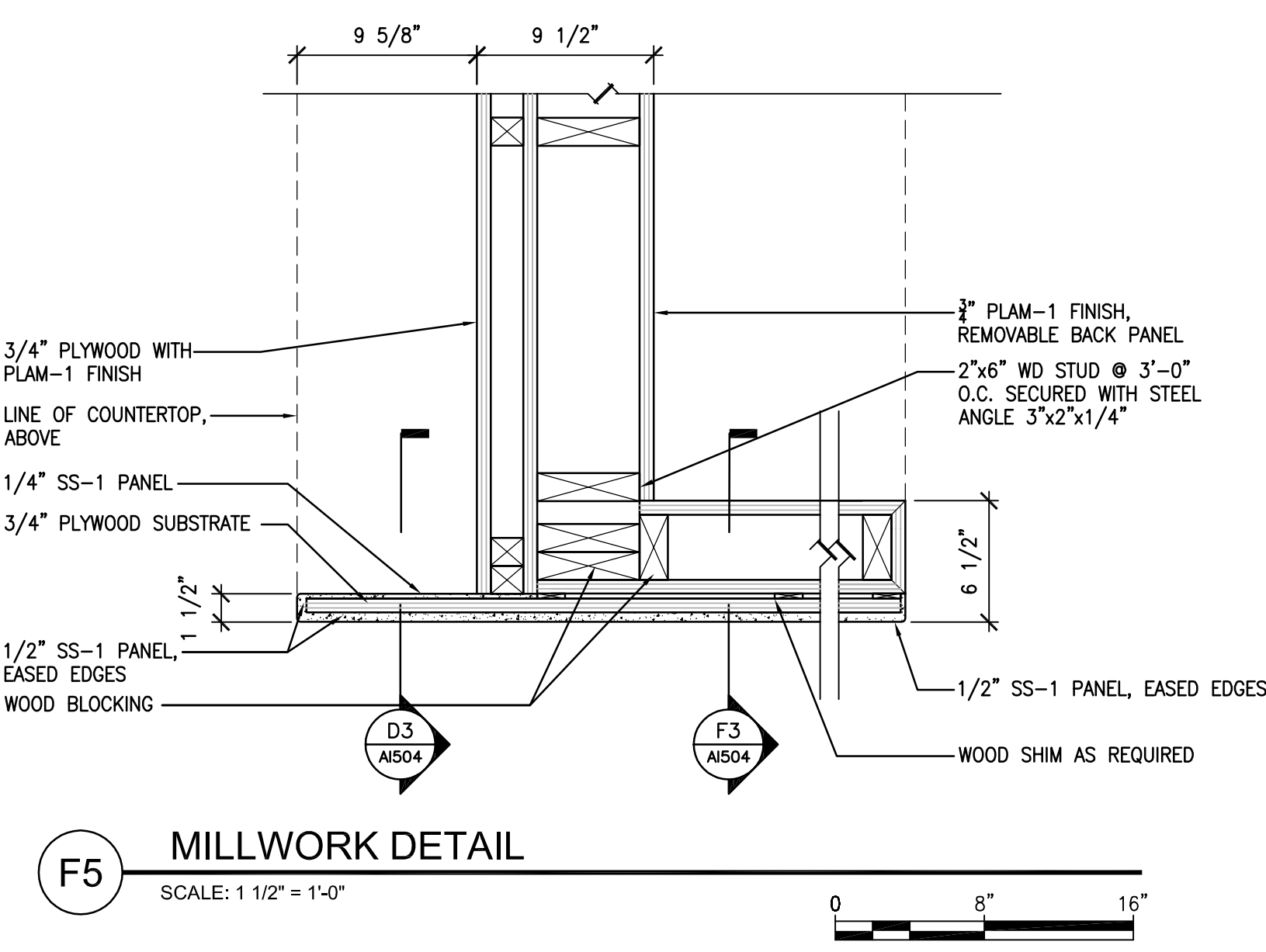
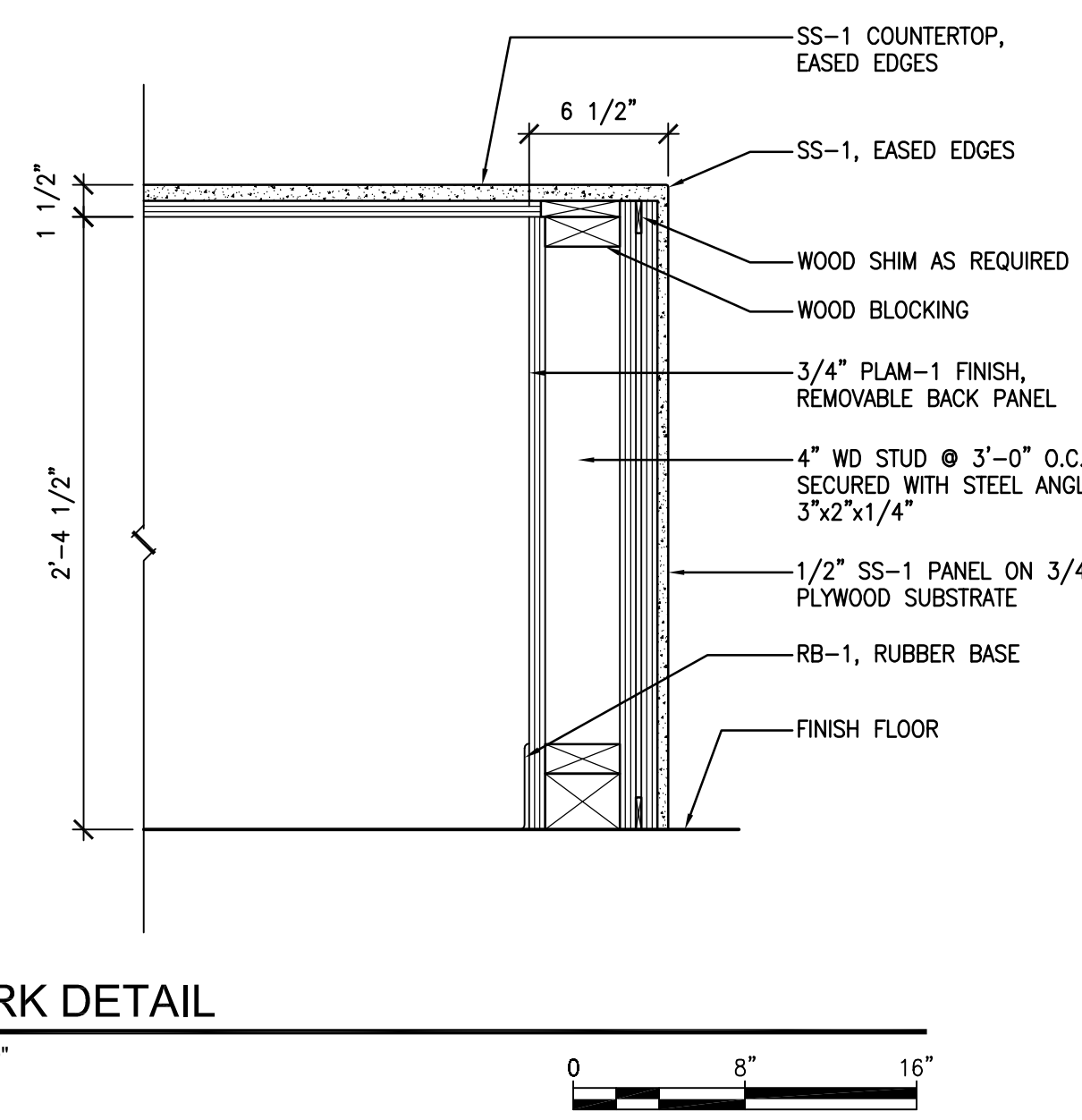
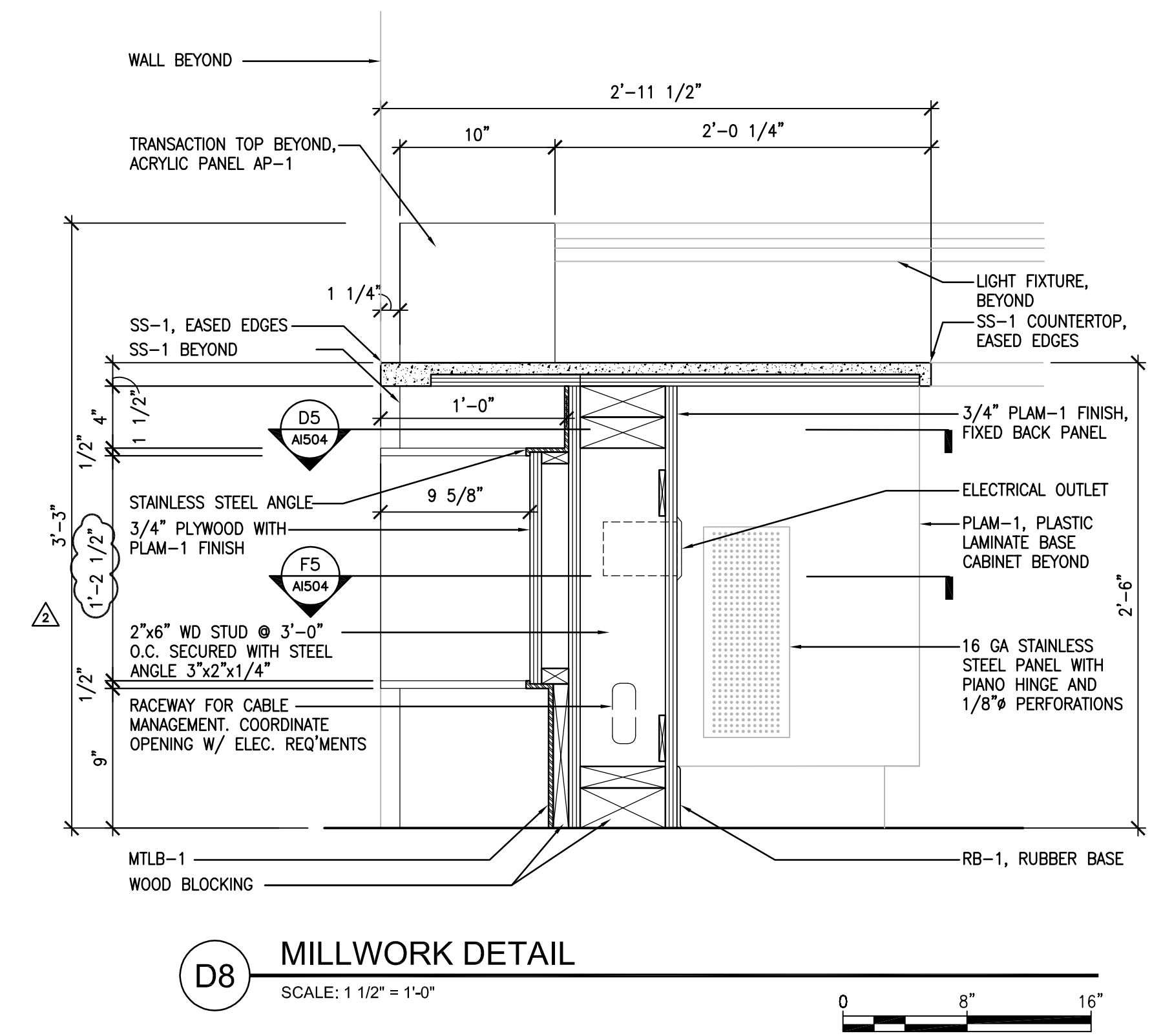
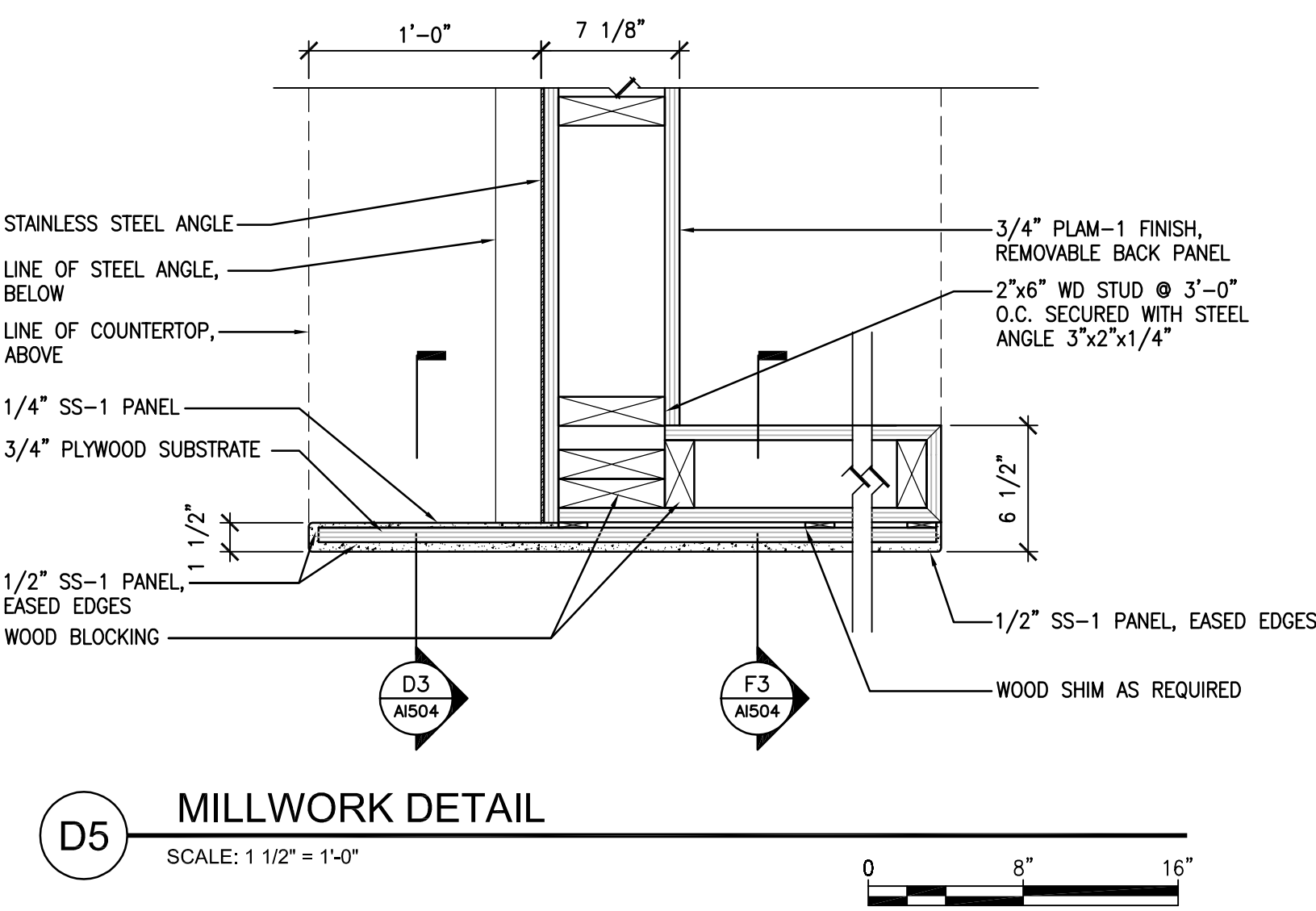
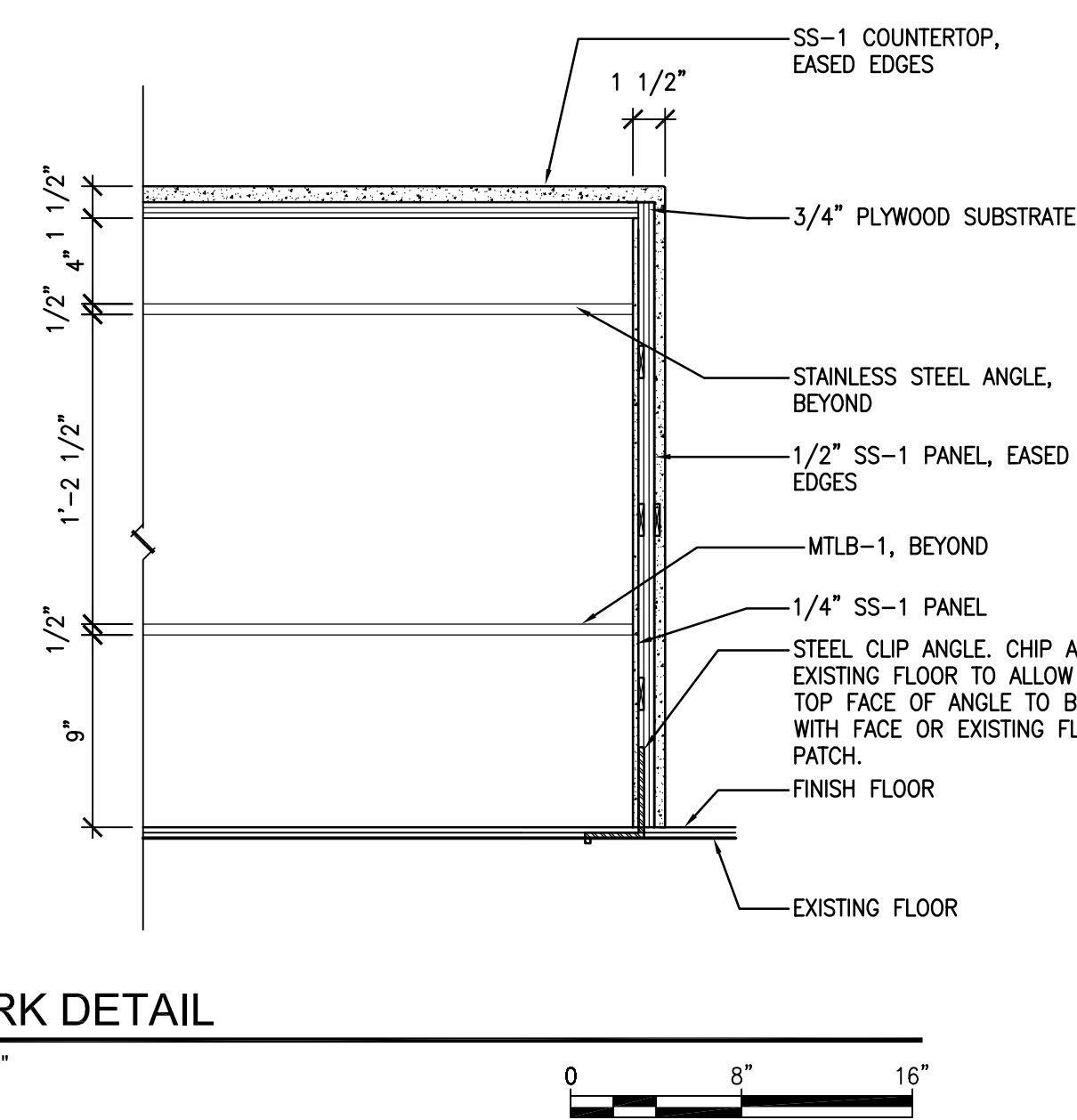
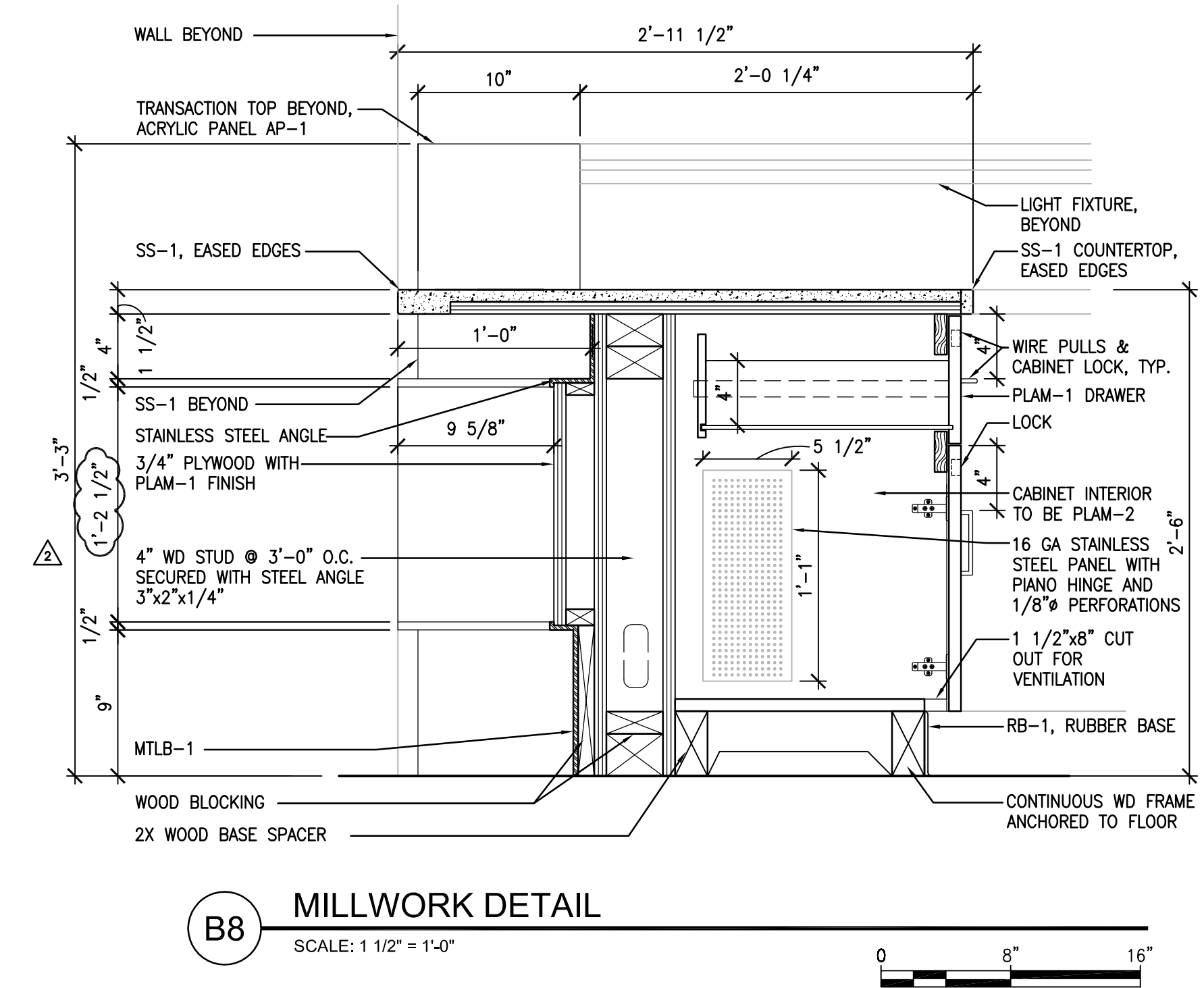
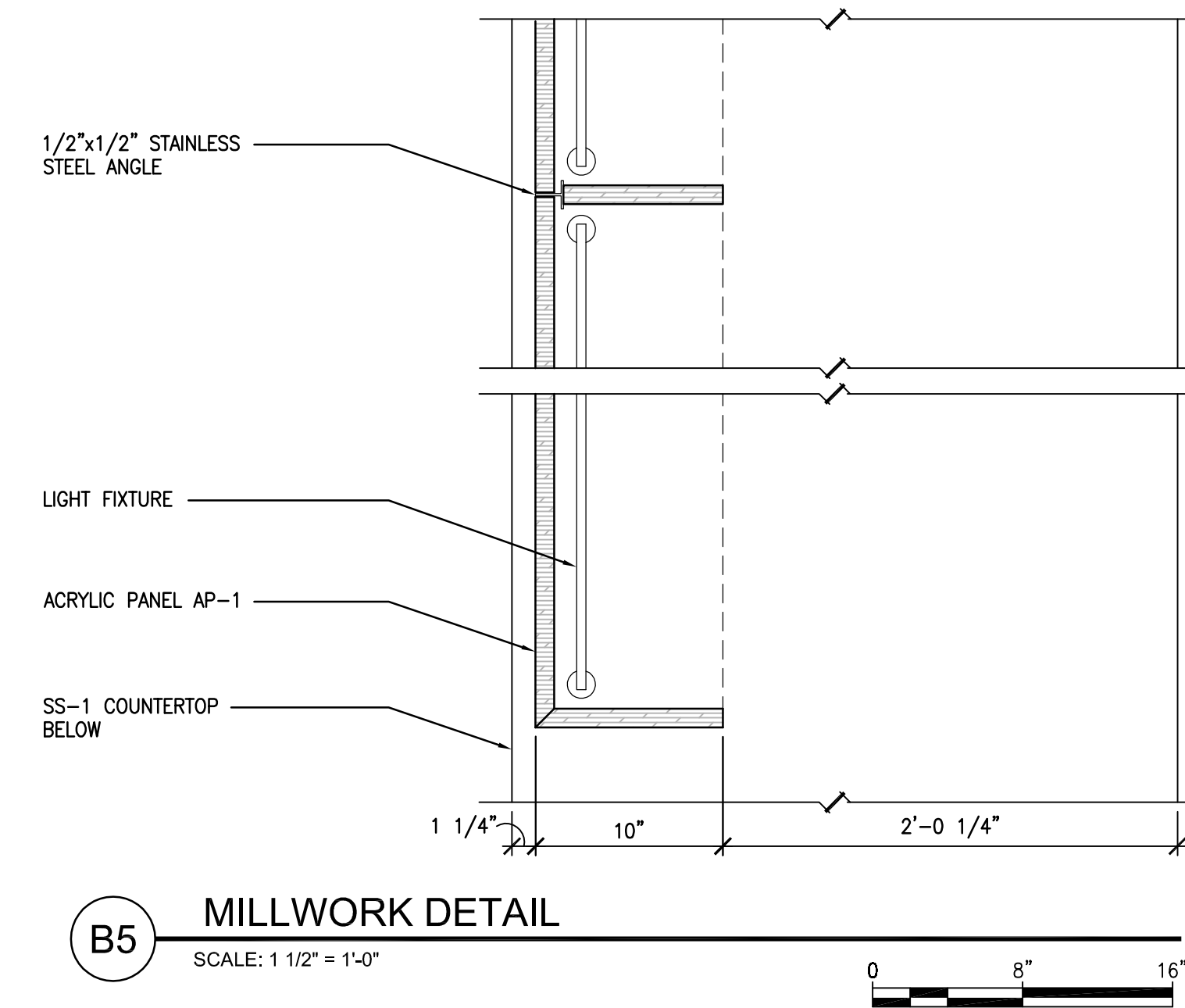
F5 IN-19.01 - FRONT ELEVATION, TYPICAL  
SCALE: 1/2" = 1'-0"



F8 IN-19.02-03 - FRONT ELEVATION, TYPICAL  
SCALE: 1/4" = 1'-0"

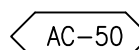
BUILDING IS FULLY SPRINKLERED

Scale: AS NOTED



		<b>CONSULTANTS:</b>		<b>KEY PLAN:</b>		<b>ARCHITECT/ENGINEERS:</b>		Drawing Title MILLWORK DETAILS		Project Title VA NY HARBOR HEALTHCARE SYSTEM MANHATTAN VAMC - BUILDING 1 9TH FLOOR RENOVATIONS		Project Number 630PR2600		Office of Construction & Facilities Management	
		ASBESTOS ABATEMENT CONSULTANT: <i>Egan Environmental Consulting, Inc.</i> 14 HIGH STREET MAHWAH, NEW JERSEY 07430 Tel: (201) 848-7790 Fax: (201) 848-7791				 360 Madison Avenue, New York, New York 10017 212.972.9800 Baltimore ■ Boston ■ Buffalo ■ Calgary ■ Chicago Houston ■ Los Angeles ■ Mumbai ■ New York ■ Phoenix St. Louis ■ San Francisco ■ Shanghai ■ Toronto Vancouver ■ Victoria ■ Washington DC		Approved Project Director		Location 423 EAST 23RD STREET NEW YORK, NY 10010		Drawing Number 1-A1505			
ADDENDUM #2  Revisions:		09/09/2013 Date						Date AUGUST 15, 2013		Checked AH / DT		Drawn SA		 	
ISSUED FOR CONSTRUCTION		08/15/2013													





Office of  
Construction &  
Facilities  
Management

---

**VA** | U.S. Department  
of Veterans Affairs