

DESIGNED
11/25/2014

I HEREBY CERTIFY THAT THESE PLANS
AND SPECIFICATIONS WERE PREPARED
BY ME OR UNDER MY CLOSE PERSONAL
SUPERVISION AND TO THE BEST OF MY KNOWLEDGE
AND BELIEF THEY COMPLY WITH ALL CITY, STATE AND
FEDERAL REQUIREMENTS, CODES AND
ORDINANCES FOR THE PROJECT AND
LOCATION INDICATED HEREON.

I HAVE PREPARED OR CAUSED TO BE
PREPARED THESE PLANS AND SPECIFICATIONS
FOR THE PROJECT AND LOCATION INDICATED
HEREON AND I AM A duly Licensed Professional Engineer
AND STATE THAT TO THE BEST OF MY KNOWLEDGE
AND BELIEF THEY COMPLY WITH ALL CITY, STATE AND
FEDERAL REQUIREMENTS, CODES AND
ORDINANCES FOR THE PROJECT AND
LOCATION INDICATED HEREON.

L.B. HERBST III DATE

PROFESSIONAL DESIGN FIRM #64-002222 EXPIRES 04/30/2018
THE IDEAS AND DESIGN CONTAINED HEREIN ARE THE SOLE PROPERTY OF
L.B. HERBST AND ASSOCIATES, INC. AND MAY NOT BE COPIED IN WHOLE OR
IN PART WITHOUT THE WRITTEN CONSENT OF L.B. HERBST & ASSOCIATES, INC. © 2018

4	CLARIFICATIONS	3/24/13
3	CLARIFICATIONS	2/27/13
2	NOTE 24 ADDED	1/24/13
1	FIRST CONCEPT	1/26/13
NO.	ISSUE	DATE

NSOC REMODELING
HINES VA

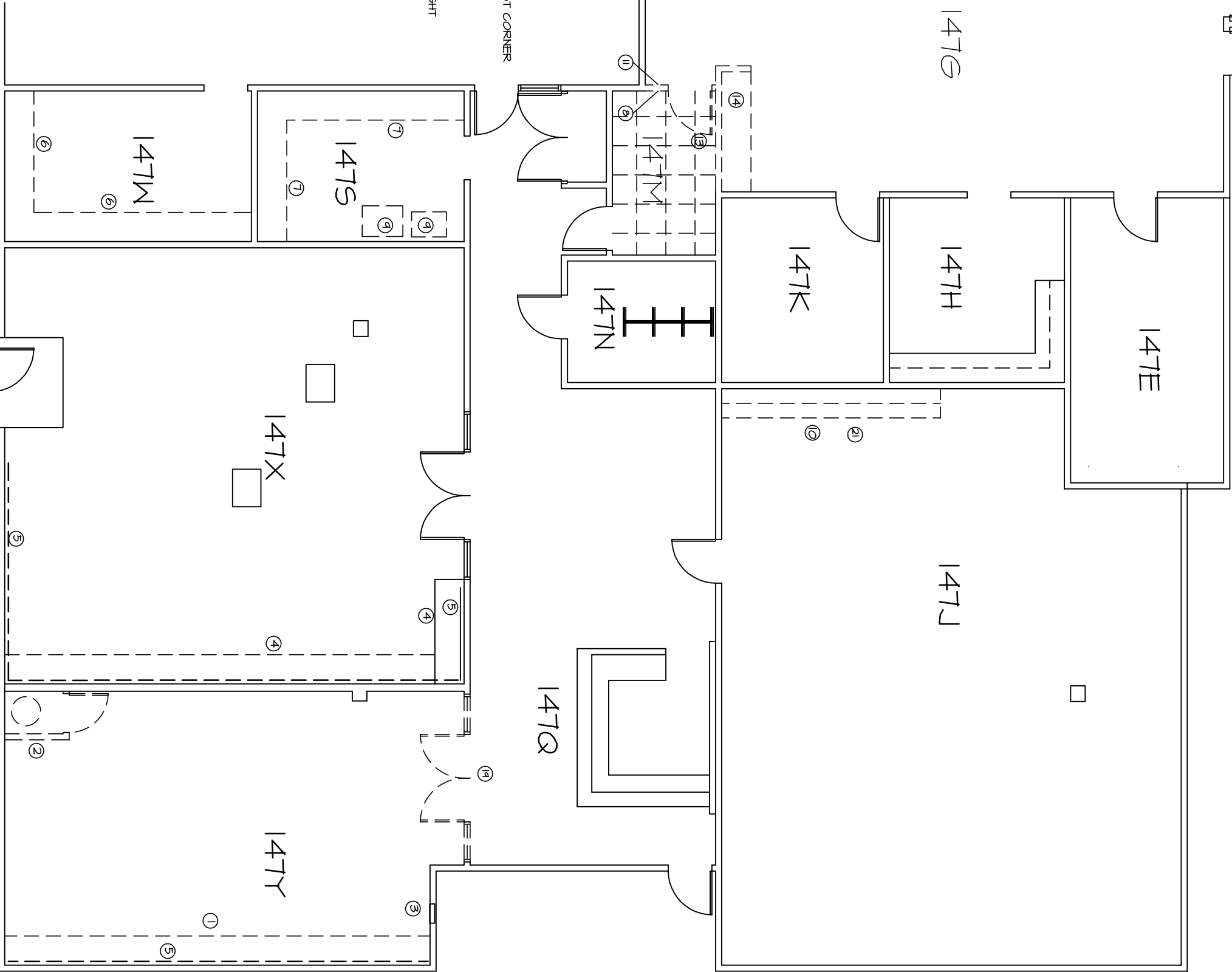
BUILDING
215

DRAWING TITLE
FLOOR PLAN

SCALE	NOTED	JOB NO.	13011
PLOTFILE			
DRAWN	LHIII	SHEET NUMBER	
CHECKED	LHIII		

A-1
OF SHEETS

- FLOOR PLAN NOTES
- MARK ROOM NOTE
- 147Y REMOVE COUNTER ALONG SOUTH WALL
 - 147Y REMOVE CLOSET & CHEMICAL BOTTLE
 - 147Y REMOVE FM200 ALARM PANEL, APPARATICE, AND POWER
 - 147X REMOVE COUNTERS AT SOUTH WALL - LEAVE SECTIONS AT EAST WALL
 - 147X REMOVE WIREMOLD ALONG WALL - LEAVE THREE EXTG OUTLETS IN SOUTHEAST CORNER
 - 147M REMOVE EXTG COUNTERS / CABINETS
 - 147S REMOVE EXTG CARD READER
 - 147Q REMOVE EXTG CABINETS AND COUNTERS, LOWER OUTLETS TO STANDARD HEIGHT
 - 147J REMOVE EXTG CARD READER
 - 147I REMOVE EXTG CARD READER
 - 147H REMOVE EXTG CARD READER
 - 147G REMOVE EXTG CARD READER
 - 147F REMOVE EXTG CARD READER
 - 147E RELOCATE DOOR SEE SHEET A-2
 - 147G REMOVE EXISTING WALLS, CABINETS, & COUNTER AS SHOWN
 - 147G REMOVE EXISTING LOCKERS, WALLS, AND SOFFIT
 - 147G REMOVE EXISTING CLOSET, CHEMICAL TANK, AND PIPING
 - 147G REMOVE AND RELOCATE EXISTING WHITE BOARDS PER MGMT DIRECTION
 - 147G REMOVE EXISTING HALON PIPING FEED TO UNDERFLOOR - VERIFY IN FIELD
 - 147Y REMOVE DOUBLE DOORS AND SIDELIGHTS
 - 147B PROVIDE ALTERNATE PRICE TO REMOVE DOUBLE DOOR AND SIDELIGHTS
 - 147B REMOVE DOUBLE STUD WALL TO JUST BELOW CEILING



DEMOLITION PLAN

SCALE: 1/8" = 1'-0"